

## Wichita TMC Support- Monthly Incident Report for October 2018

There were a total of **323** actively logged incidents during the month. The Traffic Management Center (TMC) is actively staffed 6am to 7pm, Monday-Friday, but additional incidents may be recorded outside normal hours. Below is a breakdown of active incident type as well as average duration of incident by type. Incidents are only reported where TMC system coverage is available for verification.

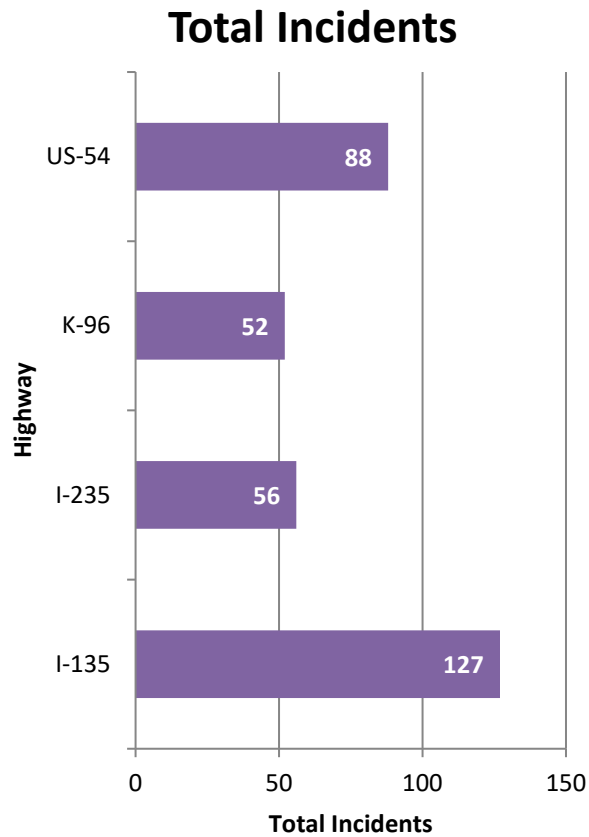


Figure 1: Total incidents by Highway

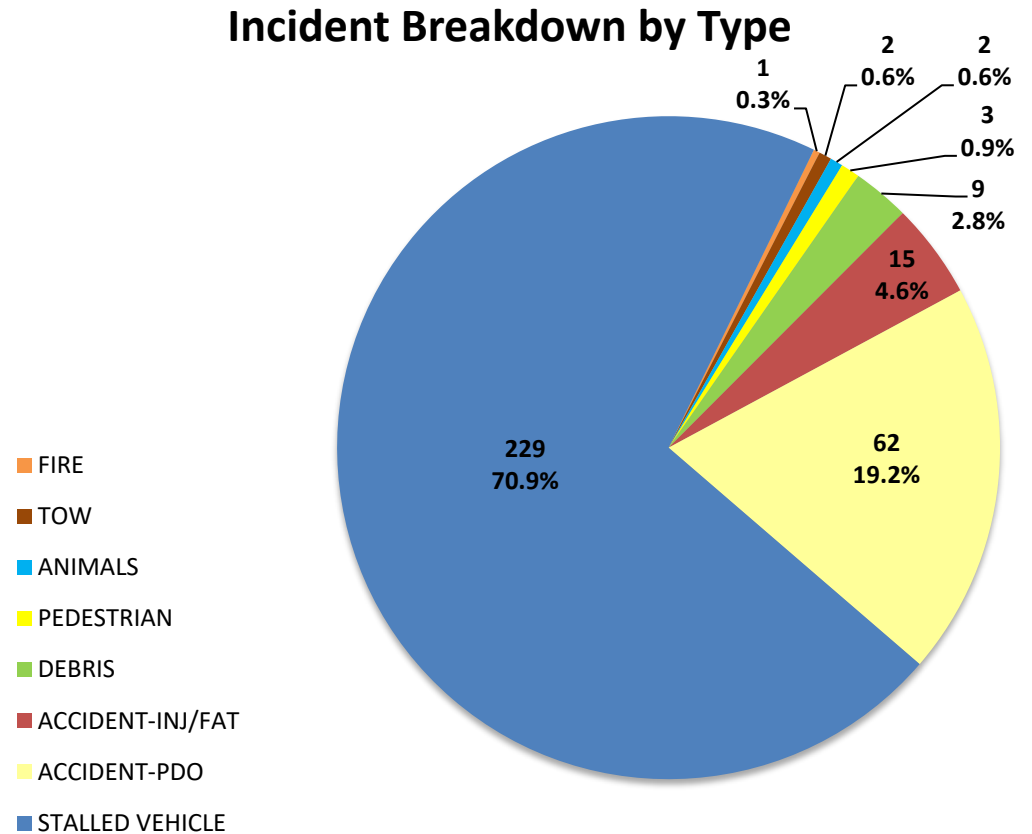
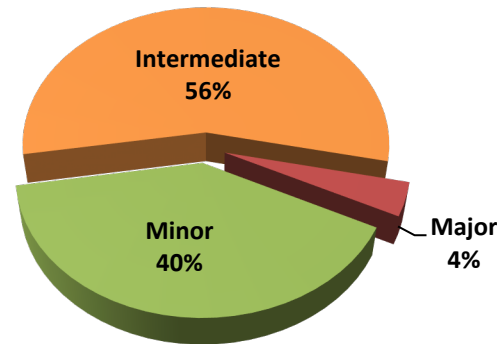


Figure 2: Number and percentage of actively logged incidents in MIST for the report month broken out by type of incident.

## Total Crashes by Severity



Severity	Total Crashes	Avg. Duration (hh:mm)
Minor	31	0:12
Intermediate	43	1:03
Major	3	2:53
<b>Grand Total</b>	<b>77</b>	<b>0:47</b>

### Incident vs. Crash

**Incident** – an event occurring on the highway that affects the safety or capacity of the highway

**Crash** – the collision of a vehicle with another vehicle, animal, pedestrian, debris or stationary object

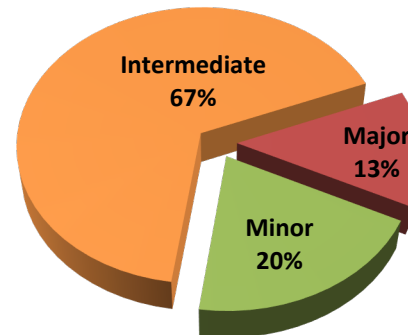
### Severity Levels

**Minor** – duration under 30 min.

**Intermediate** – duration of 30 min. to 2 hrs.

**Major** – duration greater than 2 hrs.

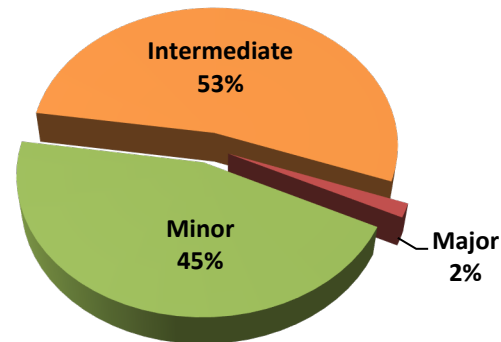
## Injury/Fatality Crashes by Severity



Severity	Total Crashes	Avg. Duration (hh:mm)
Minor	3	0:05
Intermediate	10	1:20
Major	2	3:05
<b>Grand Total</b>	<b>15</b>	<b>1:19</b>

10/10/18 NB I-135 near Hydraulic. 20:28 hrs (4:07)  
 10/10/18 NB I-135 near Hydraulic. 20:37 hrs (2:04)

## Non-Injury Crashes by Severity



Severity	Total Crashes	Avg. Duration (hh:mm)
Minor	28	0:12
Intermediate	33	0:58
Major	1	2:30
<b>Grand Total</b>	<b>62</b>	<b>0:39</b>

10/1/18 NB 2-135 near West St. 13:14 hrs (2:30)

### Total Crashes by Highway

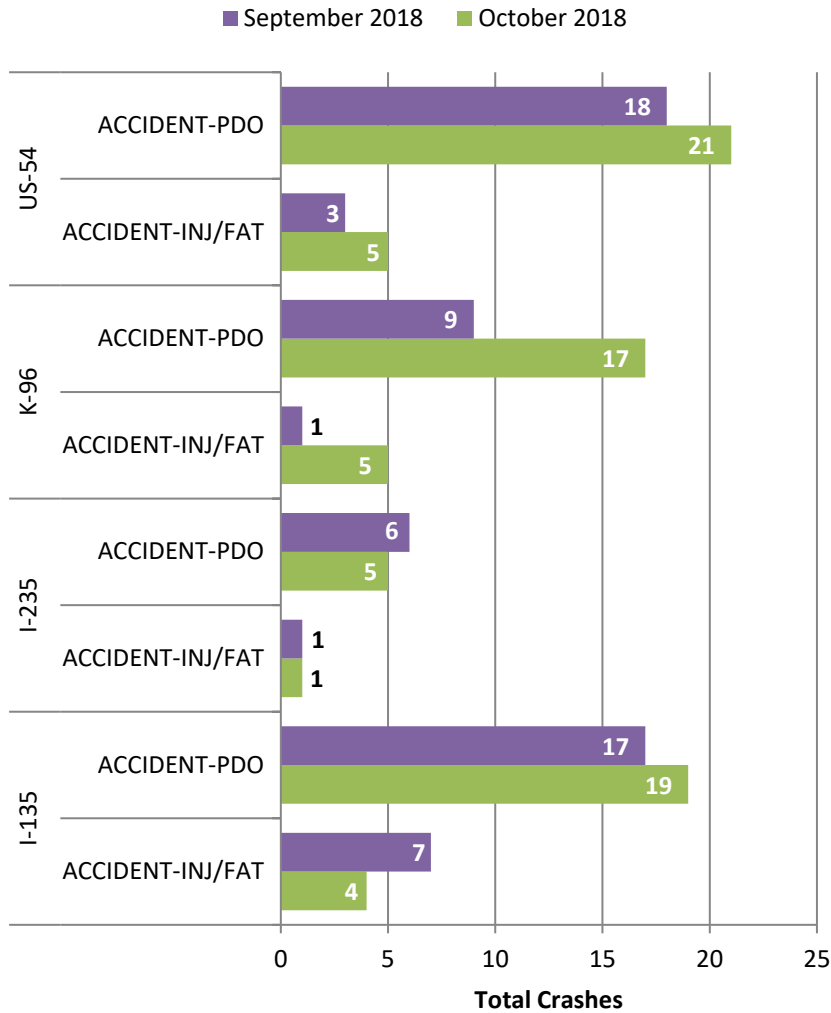


Figure 3: Total Crashes by Highway. Crashes are broken out by “Injury/Fatality” and “Property Damage Only”.

### Crash Clearance Time by Highway

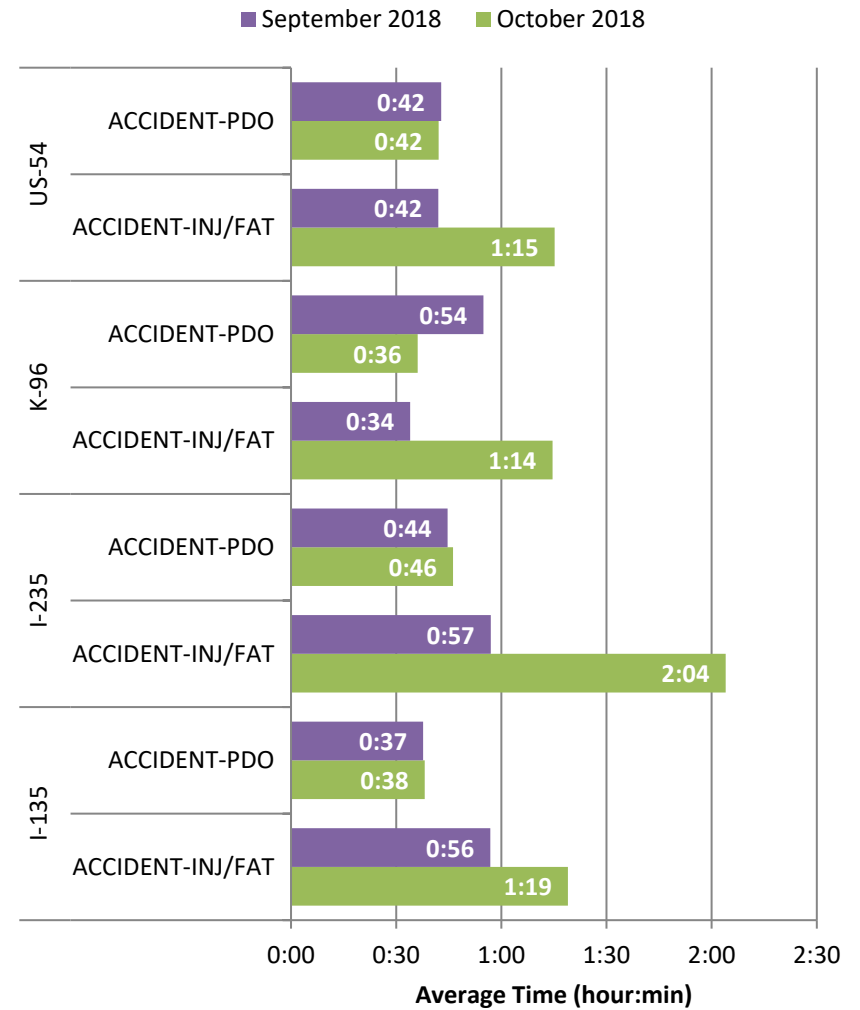
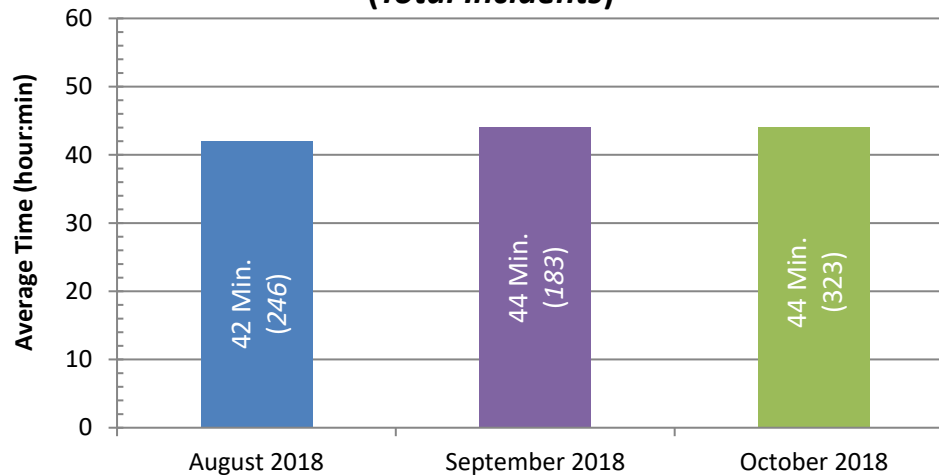


Figure 4: Average Crash Clearance Time by Highway. Crashes are broken out by “Injury/Fatality” and “Property Damage Only”.

### Average Incident Clearance Time by Month (Total Incidents)



In the month, a total of **10 secondary crashes** were reported. Secondary crashes comprised **13.0% of logged crashes**. Secondary crashes are additional crashes resulting from the original incident.  
*Last Month: 7 crashes, 11.3%*

Figure 5: Average Incident Clearance time for the last 3 months. Construction, stalled, and tow events excluded for clarity.

### Average Incident Clearance Time by Month

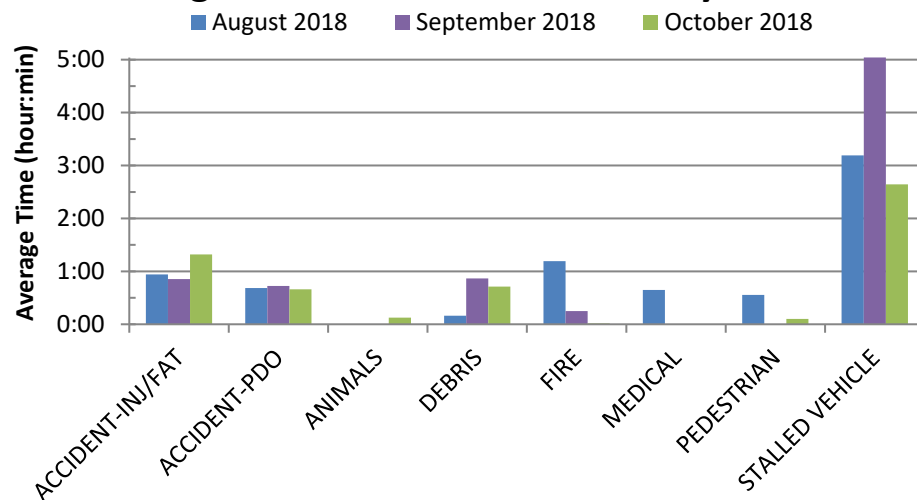


Figure 6: Average Incident Clearance time by type for the last 3 months. Construction and tow events excluded for clarity.

### Average Incident Clearance Time by Year

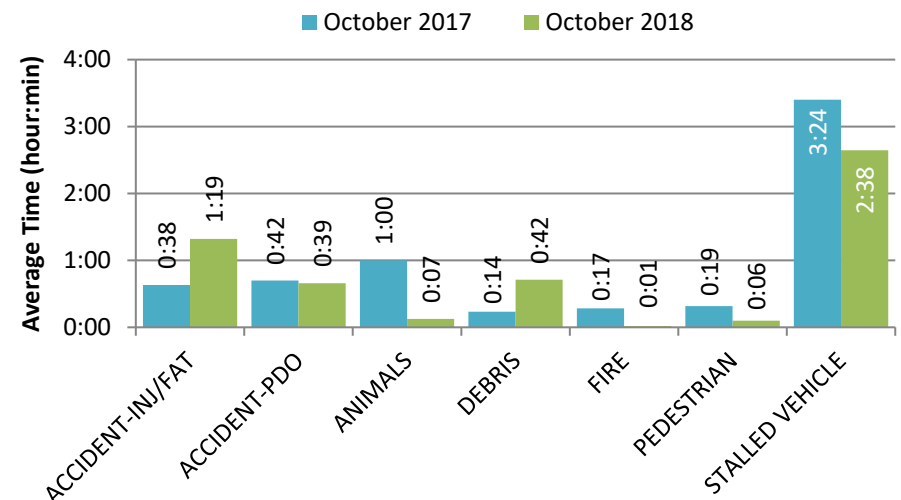


Figure 7: Average Incident Clearance time (2018 vs. 2017). Construction and tow events excluded for clarity.

### Posted DMS by Time of Day

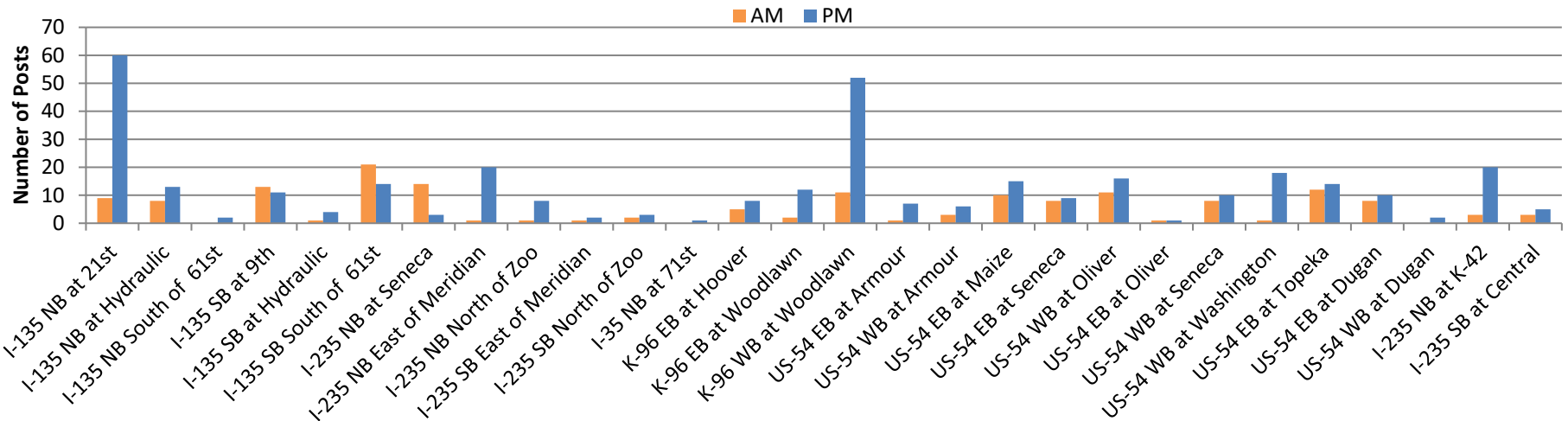


Figure 8: Number of posted messages per DMS by AM and PM hours.

### Posted Incidents by Type & Time of Day

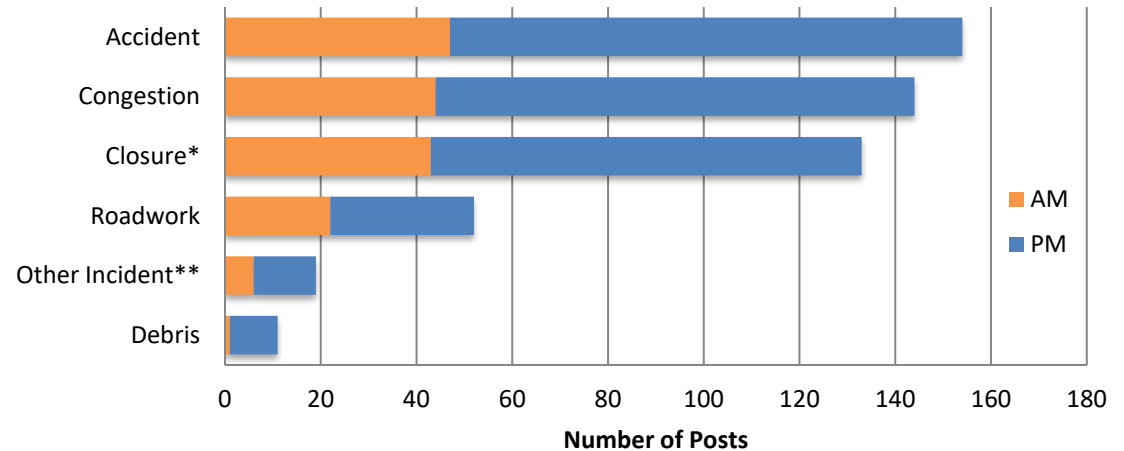


Figure 9: Posted incidents by type and AM/PM hours.

#### Dynamic Message Sign (DMS) Utilization

WICHway utilizes 29 permanent DMS. In the month, a total of **504 messages** were posted. **97%** of DMS were used at least once for an incident.

Messages shown exclude travel times and test messages. Messages shown include modifications to previous messages.

\*Closure messages include roadway closures for roadwork, incidents, and weather postings.

\*\*Other Incidents include but are not limited to stalled vehicles, fire, and medical incidents.