

Wichita TMC Support- Monthly Incident Report for October 2015

There were a total of **212** actively logged incidents during the month. The Traffic Management Center (TMC) is actively staffed 6am to 7pm, Monday-Friday, but additional incidents may be recorded outside normal hours. Below is a breakdown of active incident type as well as average duration of incident by type. Incidents are only reported where TMC system coverage is available for verification.

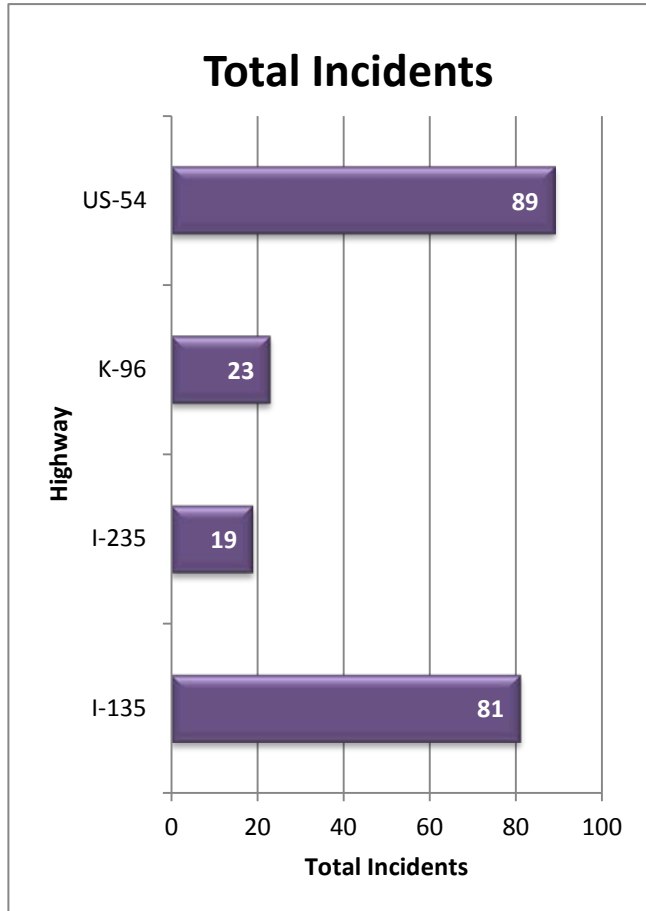


Figure 1: Total incidents by Highway

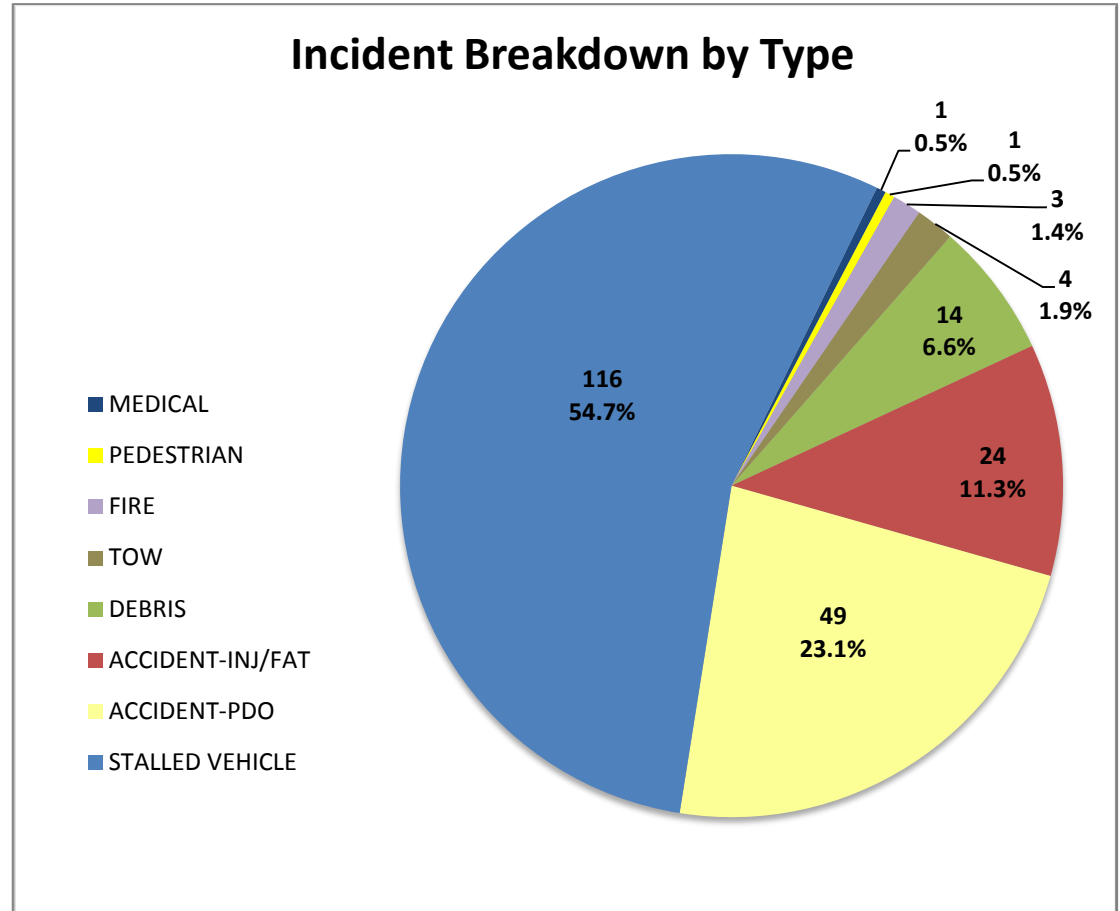
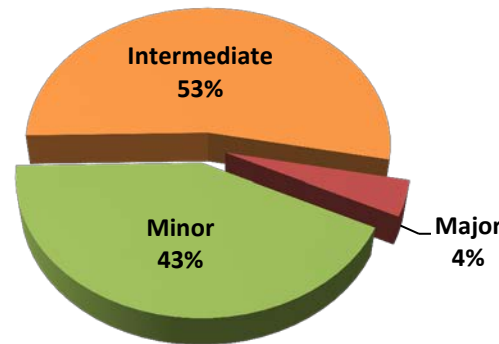


Figure 2: Number and percentage of actively logged incidents in MIST for the report month broken out by type of incident.

Total Crashes by Severity



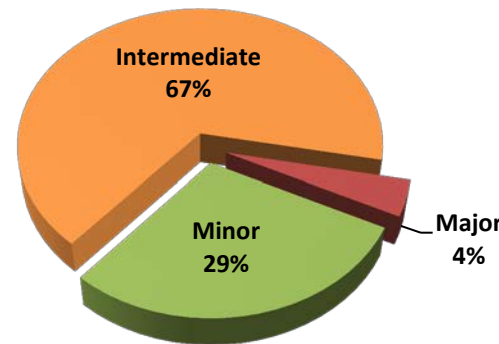
Severity	Total Crashes	Avg. Duration (hh:mm)
Minor	31	0:14
Intermediate	39	1:00
Major	3	2:15
Grand Total	73	0:43

Incident vs. Crash

Incident- an event occurring on the highway that affects the safety or capacity of the highway

Crash- the collision of a vehicle with another vehicle, animal, pedestrian, debris or stationary object

Injury/Fatality Crashes by Severity



Severity	Total Crashes	Avg. Duration (hh:mm)
Minor	7	0:16
Intermediate	16	1:04
Major	1	2:05
Grand Total	24	0:53

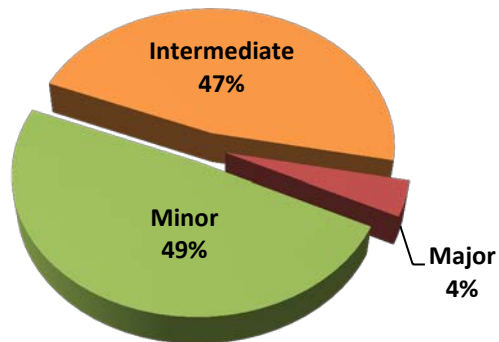
Severity Levels

Minor- duration under 30 min.

Intermediate- duration of 30 min. to 2 hrs.

Major – duration greater than 2 hrs.

Non-Injury Crashes by Severity



Severity	Total Crashes	Avg. Duration (hh:mm)
Minor	24	0:13
Intermediate	23	0:57
Major	2	2:20
Grand Total	49	0:39

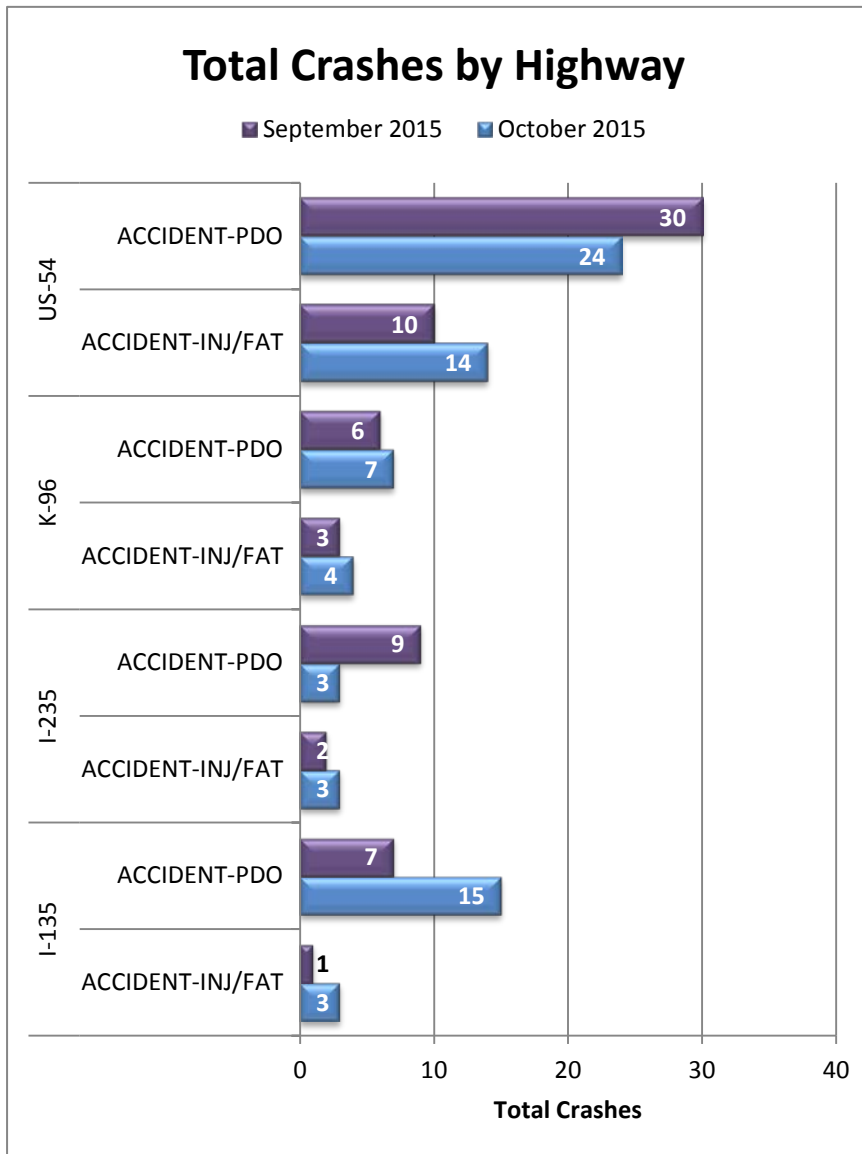


Figure 3: Total Crashes by Highway. Crashes are broken out by “Injury/Fatality” and “Property Damage Only”.

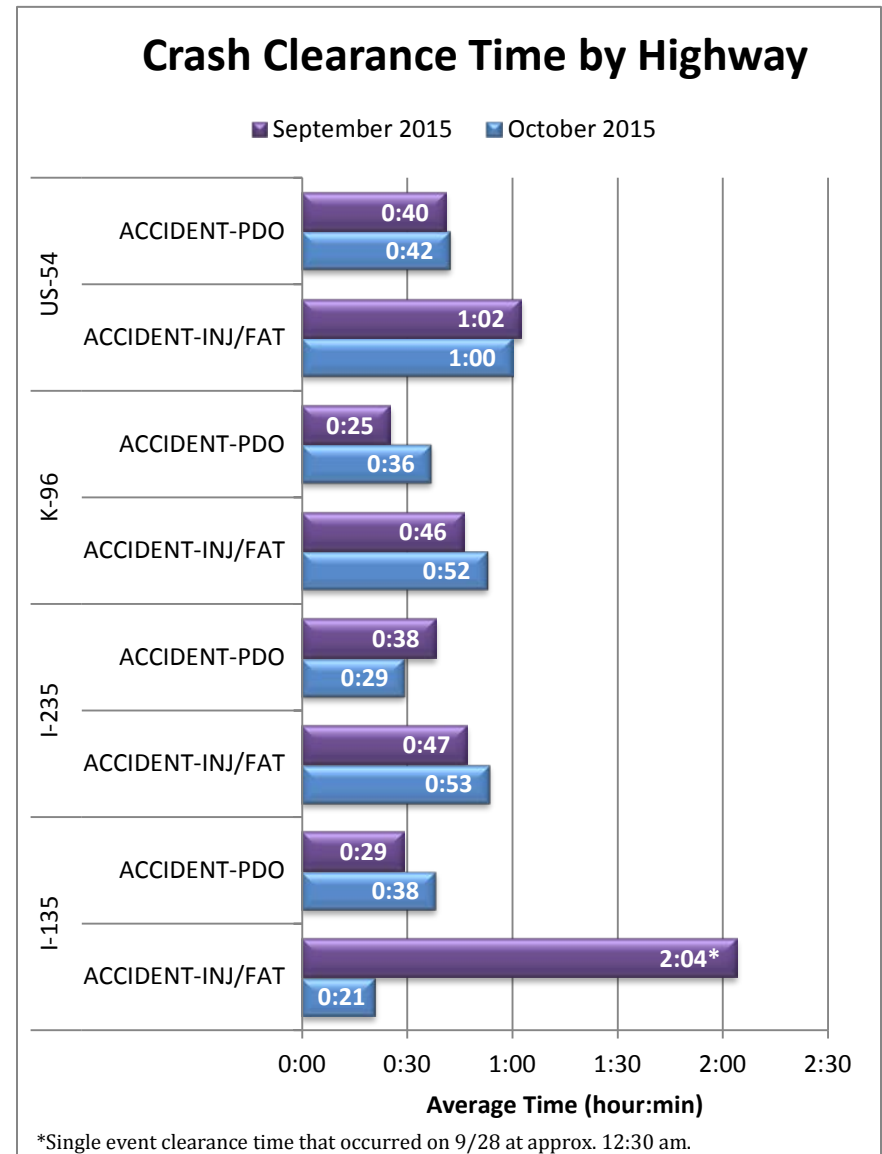


Figure 4: Average Crash Clearance Time by Highway. Crashes are broken out by “Injury/Fatality” and “Property Damage Only”.

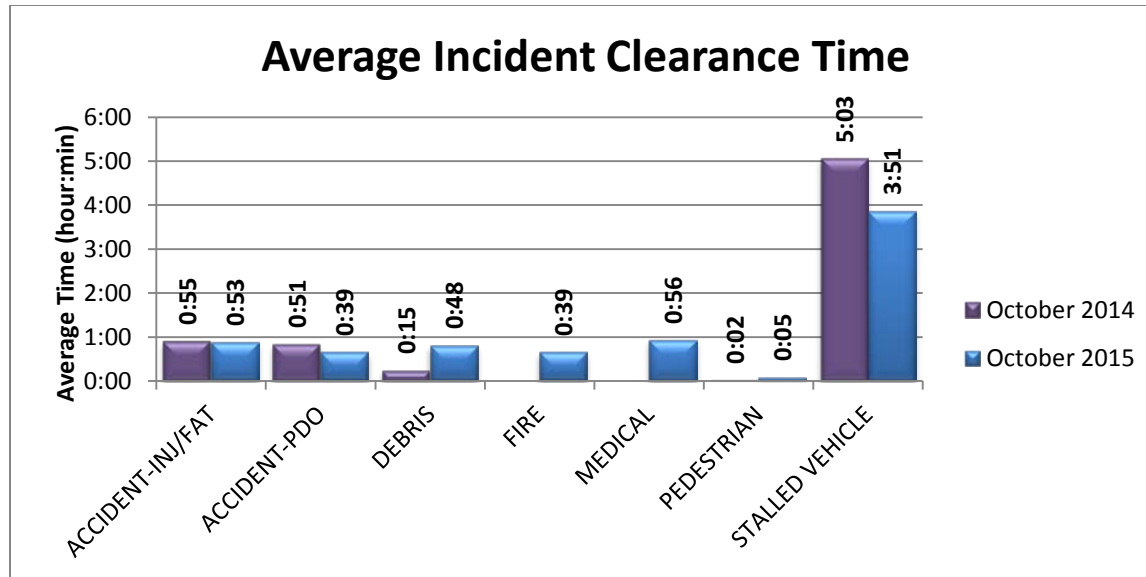


Figure 5: Average Incident Clearance time (2015 vs. 2014). Construction and tow events excluded for clarity.

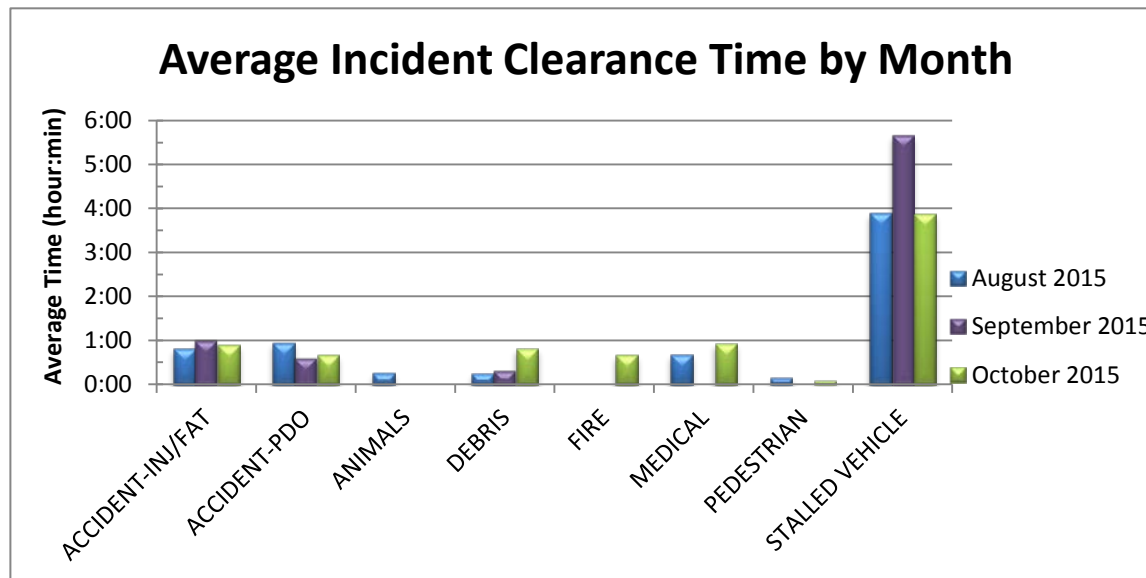


Figure 6: Average Incident Clearance time by type for the last 3 months. Construction and tow events excluded for clarity.