

Wichita TMC Support- Monthly Incident Report for September 2015

There were a total of 199 actively logged incidents during the month. The Traffic Management Center (TMC) is actively staffed 6am to 7pm, Monday-Friday, but additional incidents may be recorded outside normal hours. Below is a breakdown of active incident type as well as average duration of incident by type. Incidents are only reported where TMC system coverage is available for verification.

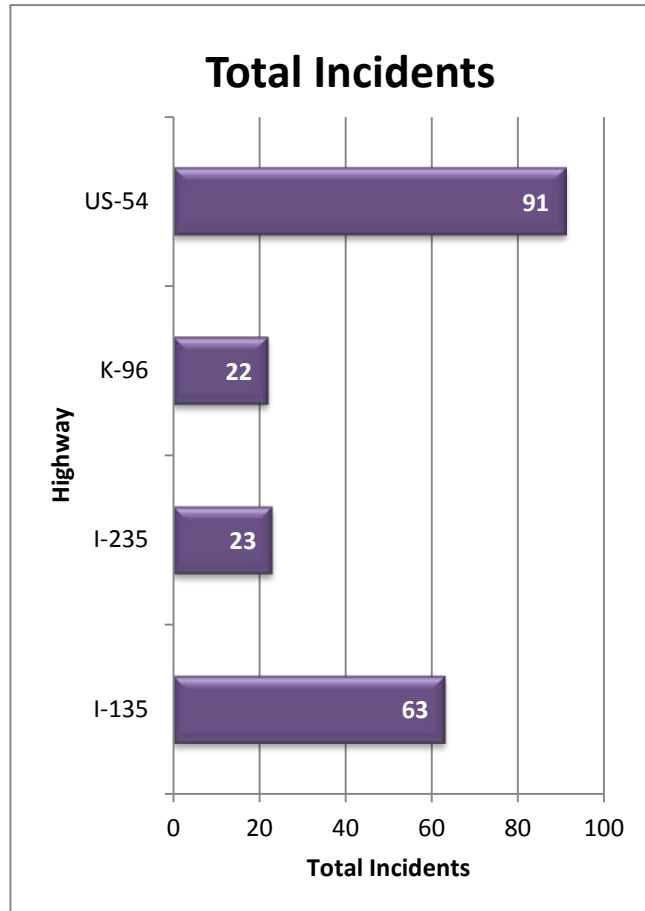


Figure 1: Total incidents by Highway

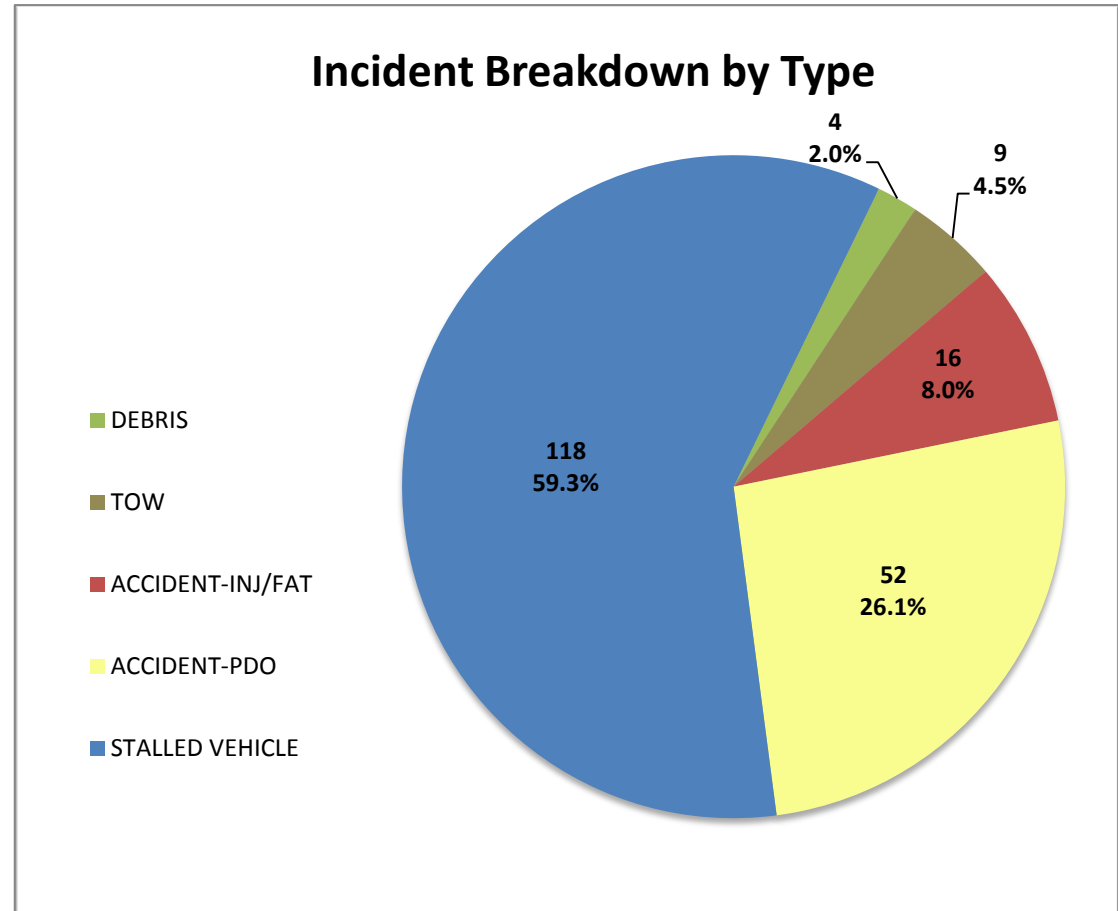
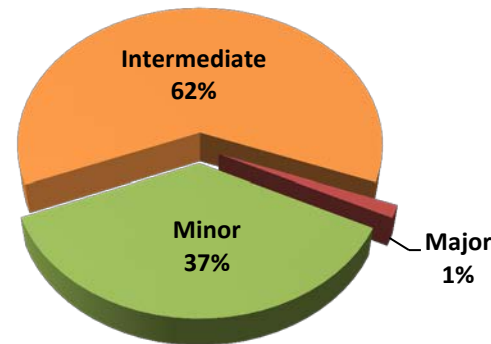


Figure 2: Number and percentage of actively logged incidents in MIST for the report month broken out by type of incident.

Total Crashes by Severity



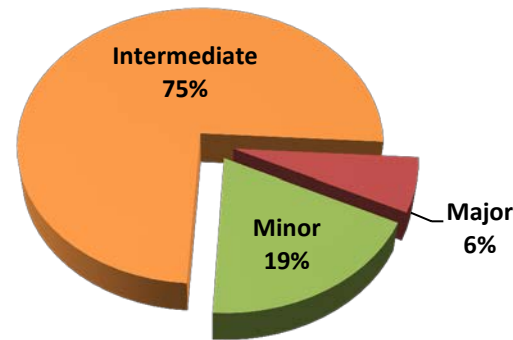
| Severity | Total Crashes | Avg. Duration (hh:mm) |
|--------------------|---------------|-----------------------|
| Minor | 25 | 0:14 |
| Intermediate | 42 | 0:57 |
| Major | 1 | 2:04 |
| Grand Total | 68 | 0:42 |

Incident vs. Crash

Incident- an event occurring on the highway that affects the safety or capacity of the highway

Crash- the collision of a vehicle with another vehicle, animal, pedestrian, debris or stationary object

Injury/Fatality Crashes by Severity



| Severity | Total Crashes | Avg. Duration (hh:mm) |
|--------------------|---------------|-----------------------|
| Minor | 3 | 0:15 |
| Intermediate | 12 | 1:07 |
| Major | 1 | 2:04 |
| Grand Total | 16 | 1:01 |

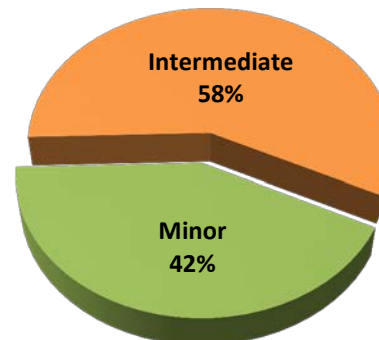
Severity Levels

Minor- duration under 30 min.

Intermediate- duration of 30 min. to 2 hrs.

Major – duration greater than 2 hrs.

Non-Injury Crashes by Severity



| Severity | Total Crashes | Avg. Duration (hh:mm) |
|--------------------|---------------|-----------------------|
| Minor | 22 | 0:14 |
| Intermediate | 30 | 0:53 |
| Grand Total | 52 | 0:37 |

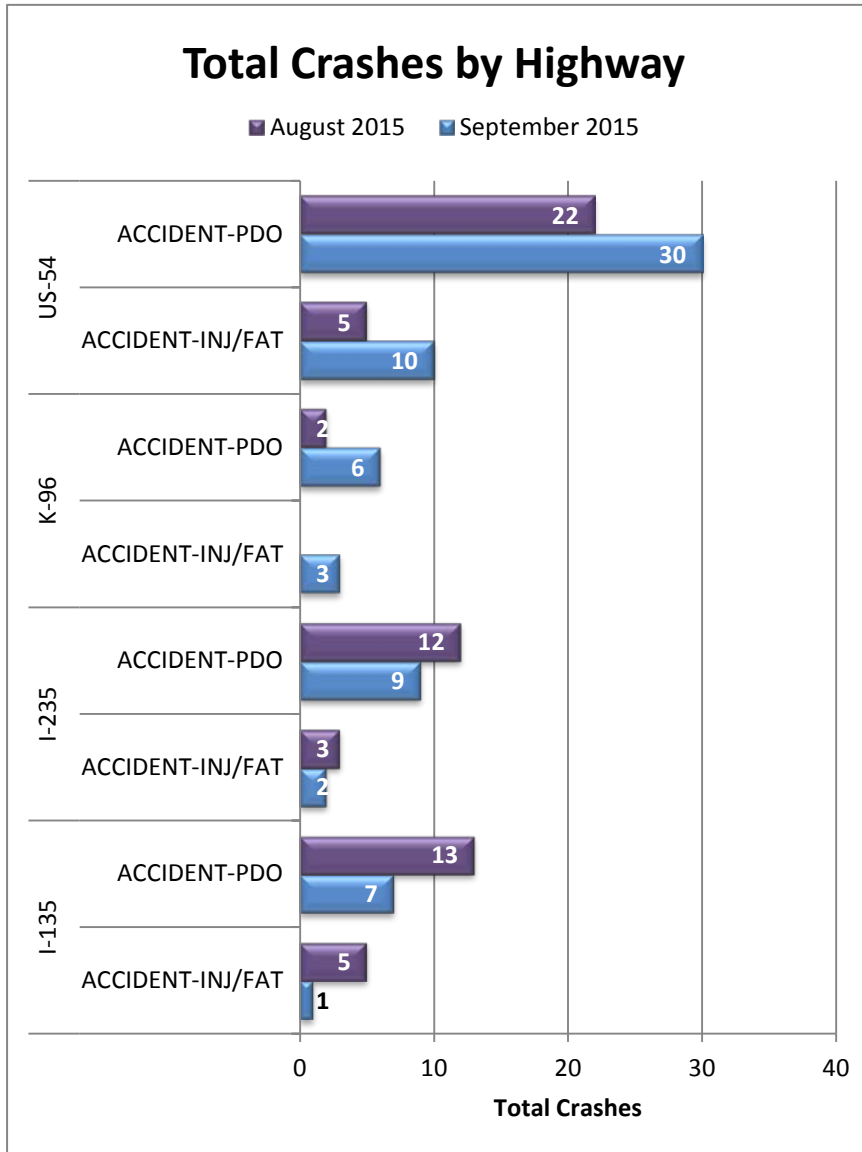


Figure 3: Total Crashes by Highway. Crashes are broken out by “Injury/Fatality” and “Property Damage Only”.

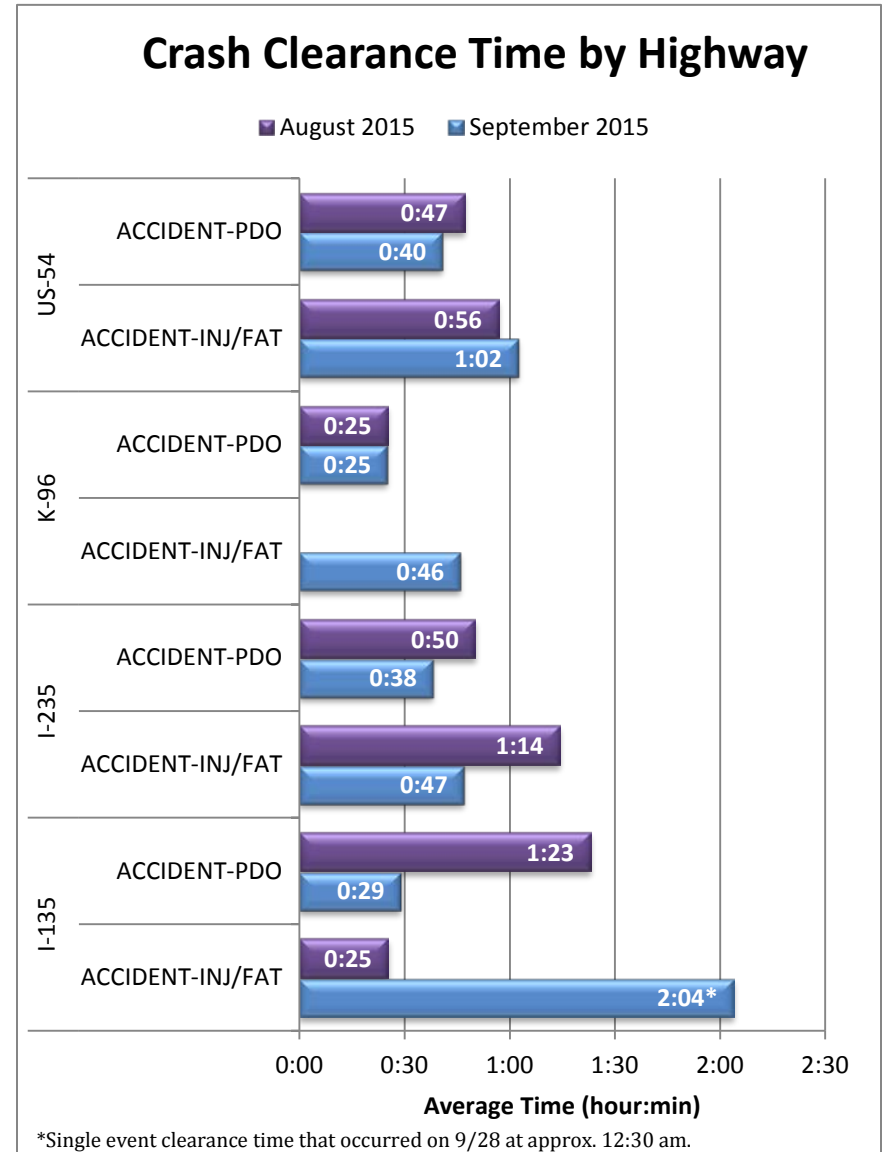


Figure 4: Average Crash Clearance Time by Highway. Crashes are broken out by “Injury/Fatality” and “Property Damage Only”.

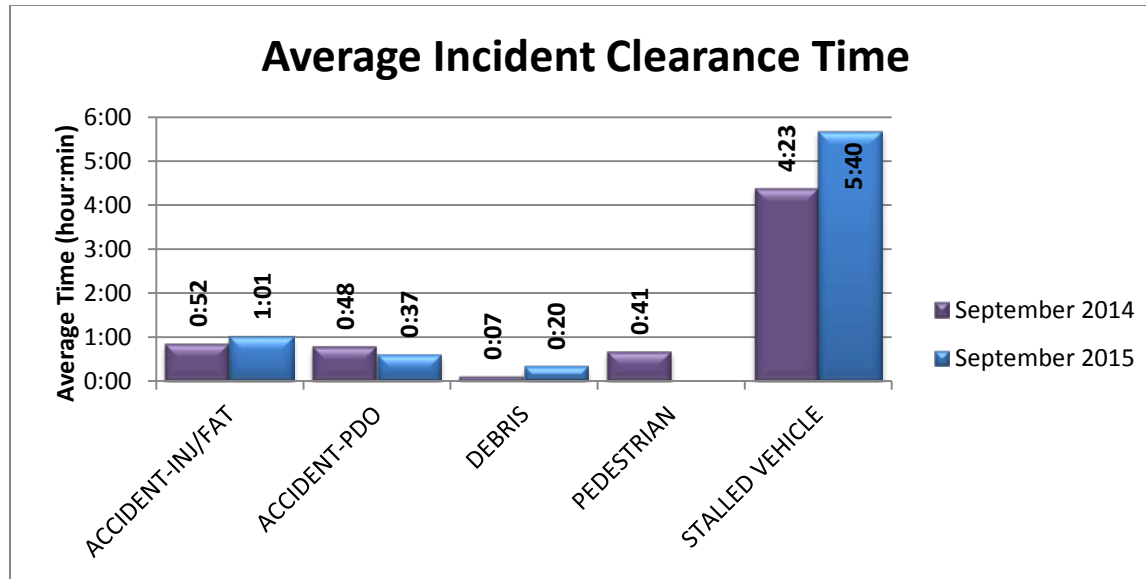


Figure 5: Average Incident Clearance time (2015 vs. 2014). Construction and tow events excluded for clarity.

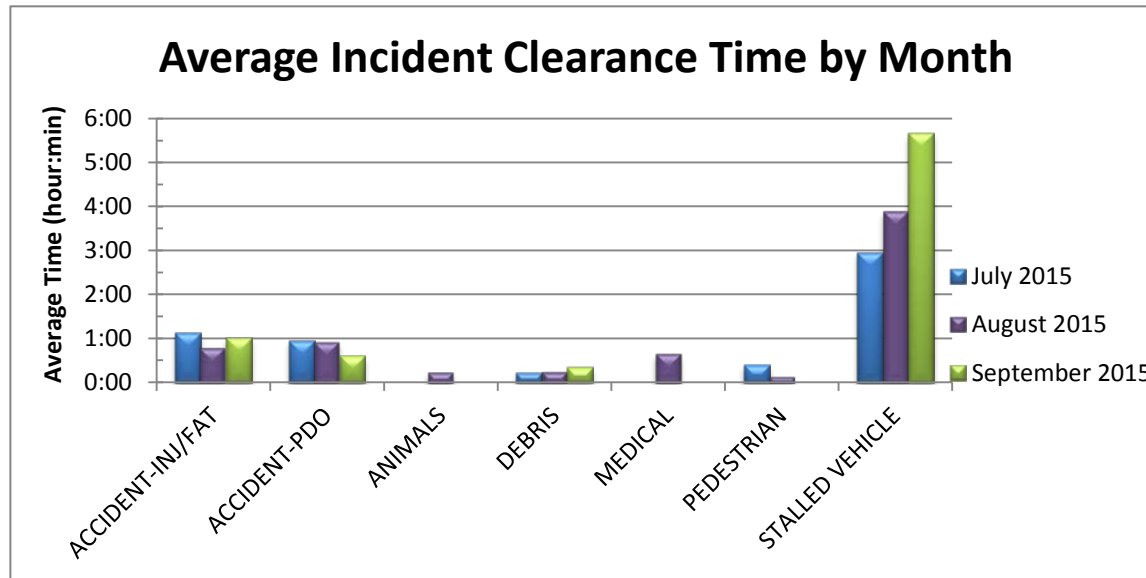


Figure 6: Average Incident Clearance time by type for the last 3 months. Construction and tow events excluded for clarity.