

Wichita TMC Support- Monthly Incident Report for July 2015

There were a total of **226** actively logged incidents during the month. The Traffic Management Center (TMC) is actively staffed 6am to 7pm, Monday-Friday, but additional incidents may be recorded outside normal hours. Below is a breakdown of active incident type as well as average duration of incident by type. Incidents are only reported where TMC system coverage is available for verification.

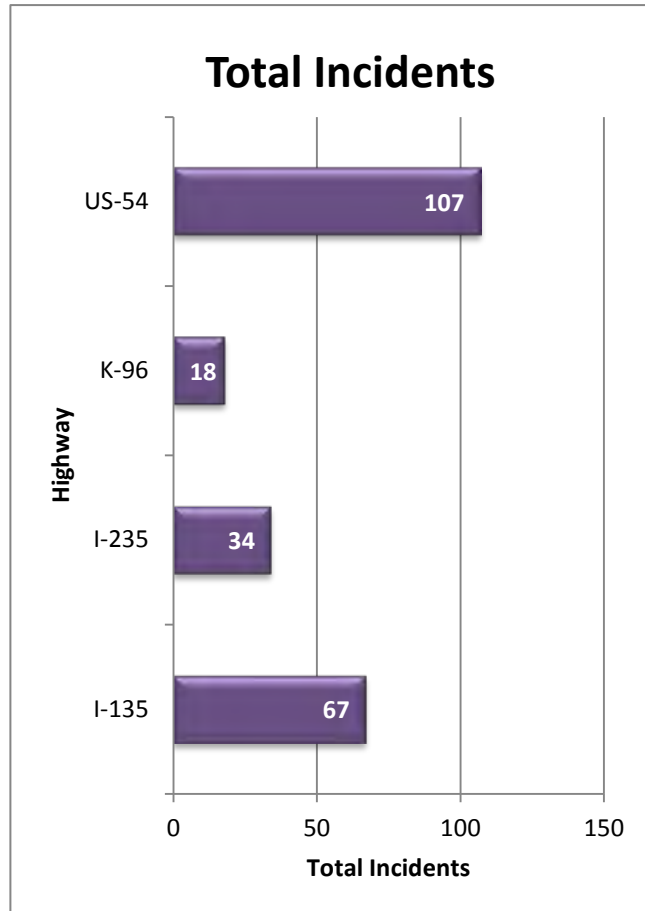


Figure 1: Total incidents by Highway

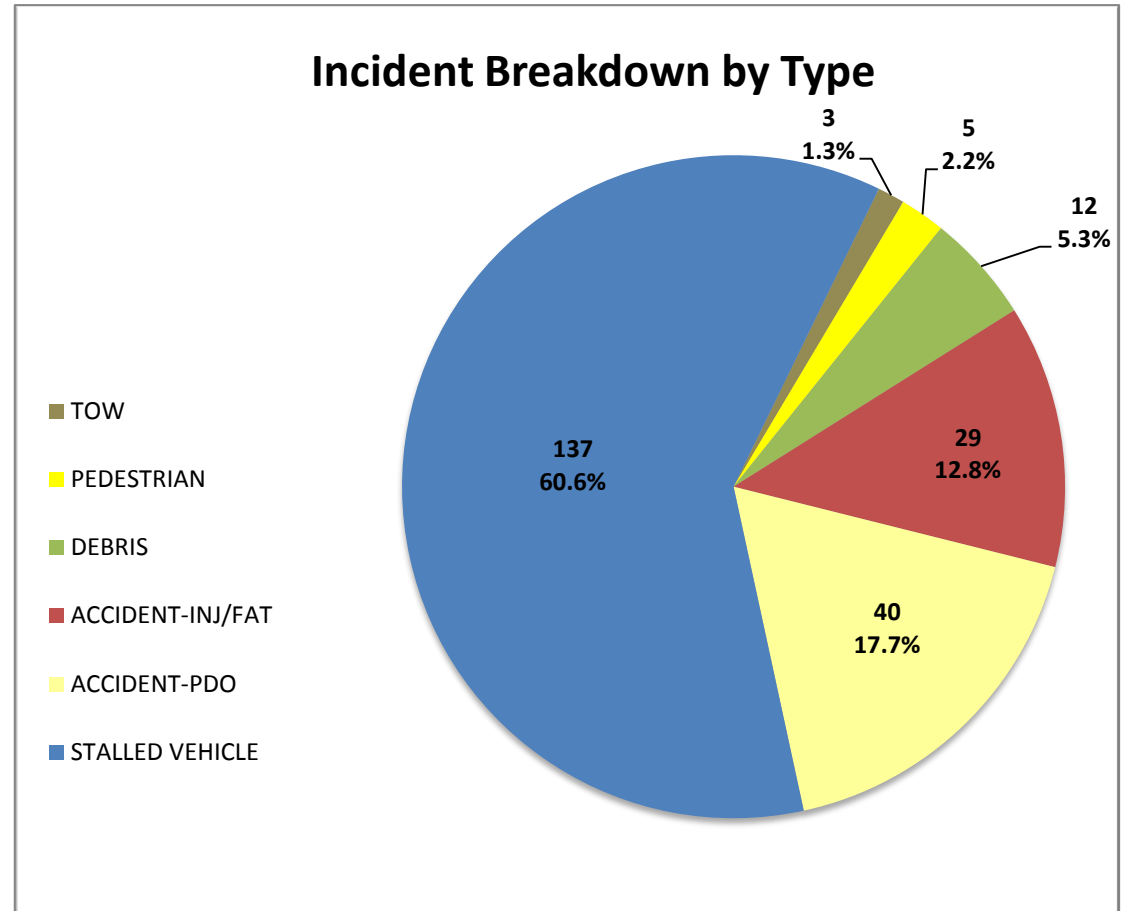
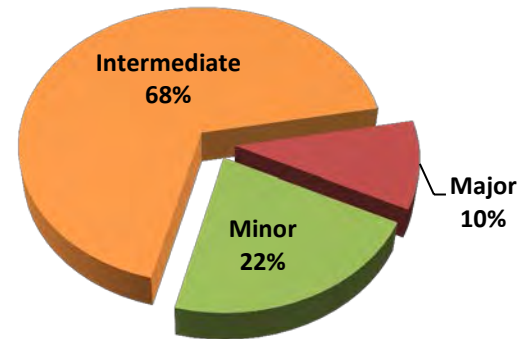


Figure 2: Number and percentage of actively logged incidents in MIST for the report month broken out by type of incident.

Total Crashes by Severity



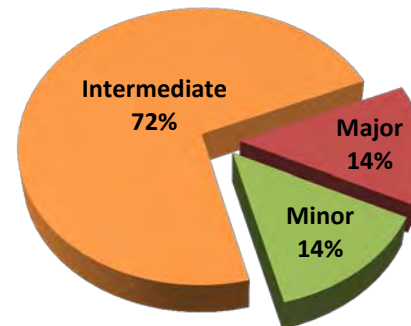
Severity	Total Crashes	Avg. Duration (hh:mm)
Minor	15	0:17
Intermediate	47	0:58
Major	7	3:01
Grand Total	69	1:02

Incident vs. Crash

Incident- an event occurring on the highway that affects the safety or capacity of the highway

Crash- the collision of a vehicle with another vehicle, animal, pedestrian, debris or stationary object

Injury/Fatality Crashes by Severity



Severity	Total Crashes	Avg. Duration (hh:mm)
Minor	4	0:20
Intermediate	21	0:58
Major	4	2:45
Grand Total	29	1:07

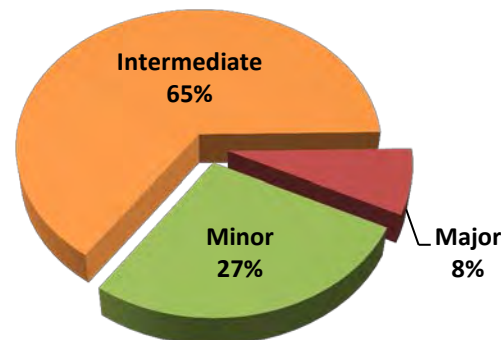
Severity Levels

Minor- duration under 30 min.

Intermediate- duration of 30 min. to 2 hrs.

Major – duration greater than 2 hrs.

Non-Injury Crashes by Severity



Severity	Total Crashes	Avg. Duration (hh:mm)
Minor	11	0:16
Intermediate	26	0:58
Major	3	3:21*
Grand Total	40	0:57

*Clearance time includes 5hr 37min clearance for oversized load blocking highway

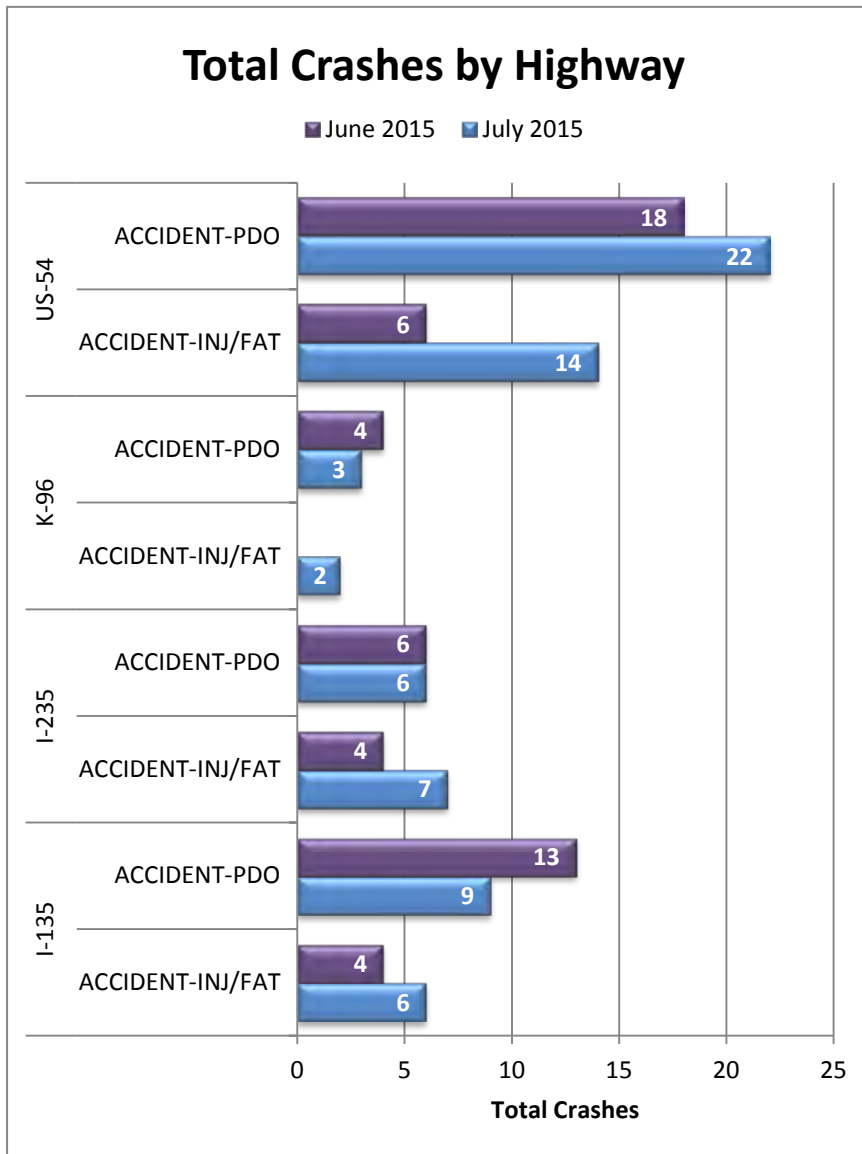


Figure 3: Total Crashes by Highway. Crashes are broken out by “Injury/Fatality” and “Property Damage Only”.

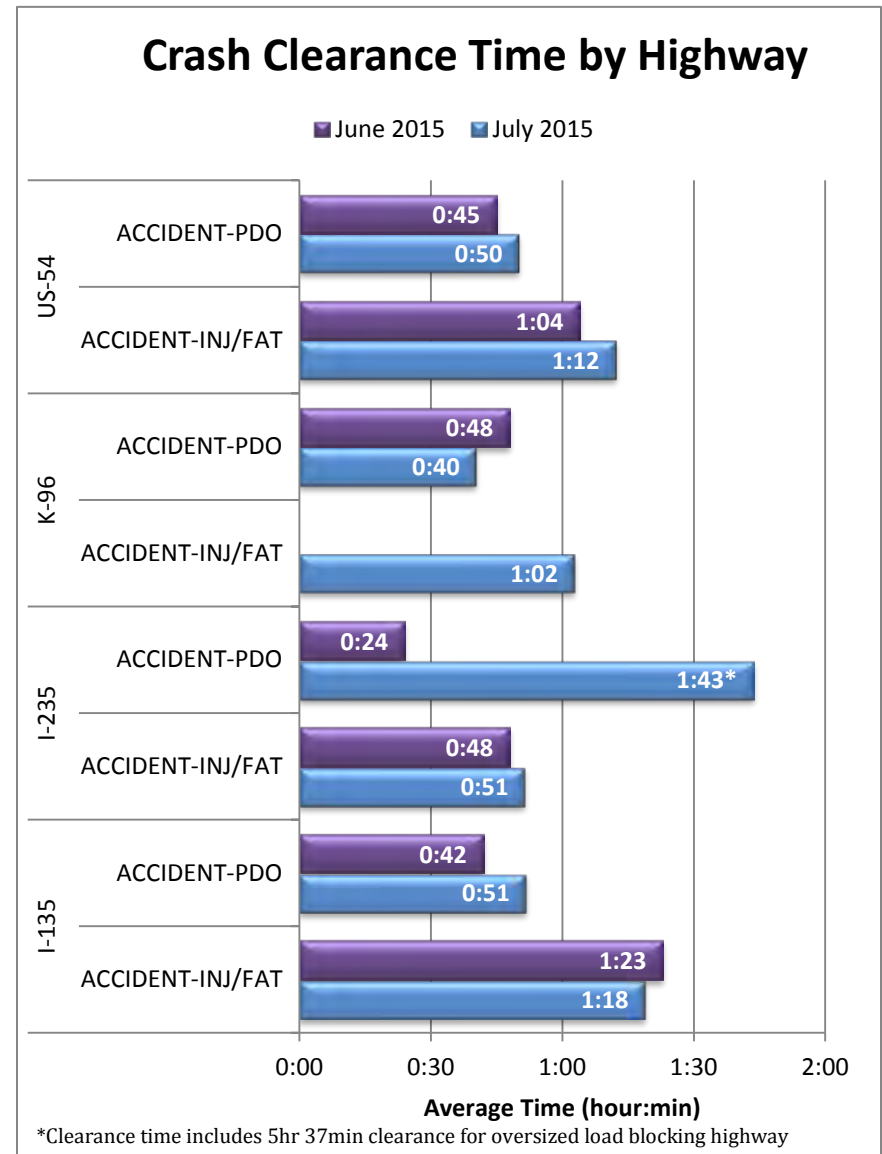


Figure 4: Average Crash Clearance Time by Highway. Crashes are broken out by “Injury/Fatality” and “Property Damage Only”.

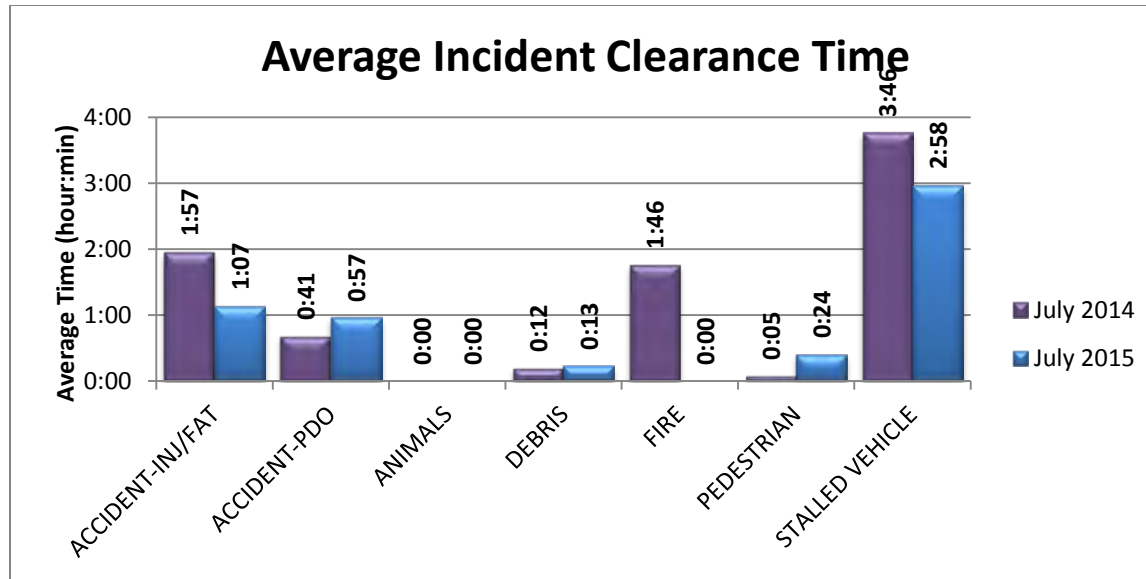


Figure 5: Average Incident Clearance time (2015 vs. 2014). Construction and tow events excluded for clarity.

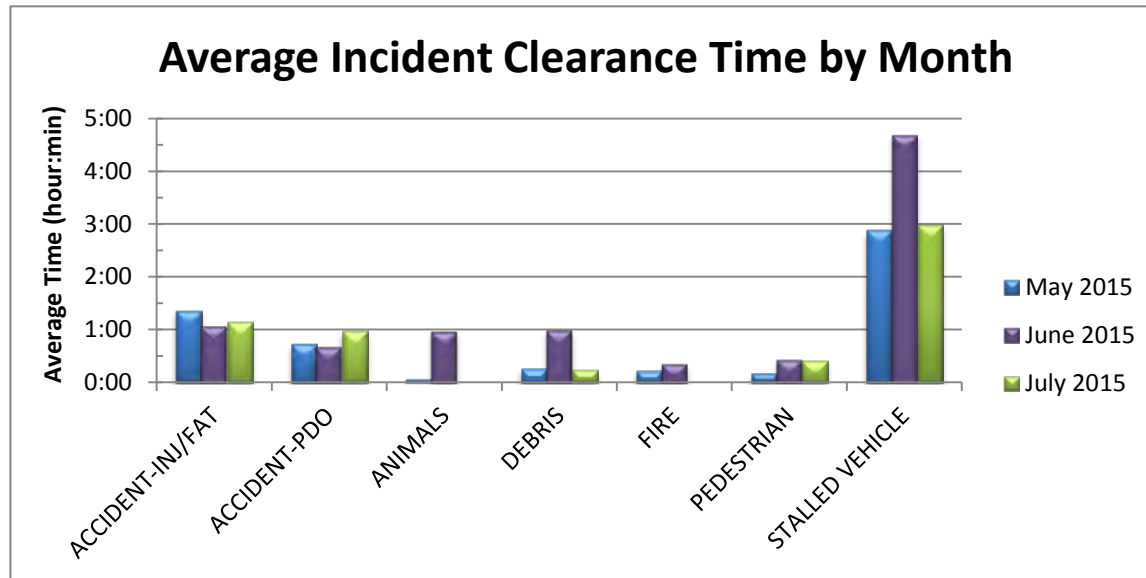


Figure 6: Average Incident Clearance time by type for the last 3 months. Construction and tow events excluded for clarity.