

Wichita TMC Support- Monthly Incident Report for April 2015

There were a total of **182** actively logged incidents during the month. The Traffic Management Center (TMC) is actively staffed 6am to 7pm, Monday-Friday, but additional incidents may be recorded outside normal hours. Below is a breakdown of active incident type as well as average duration of incident by type. Incidents are only reported where TMC system coverage is available for verification.

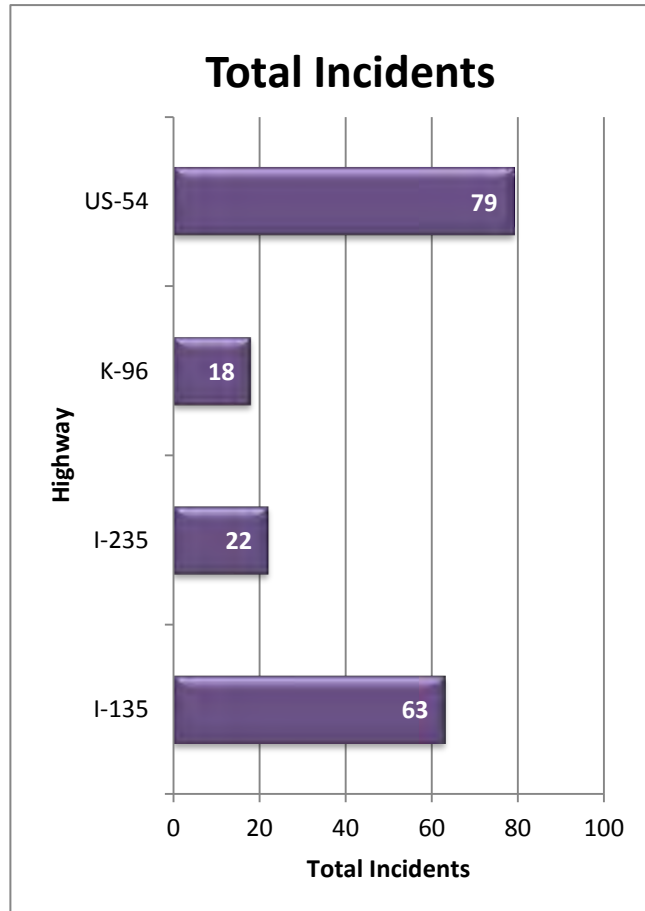


Figure 1: Total incidents by Highway

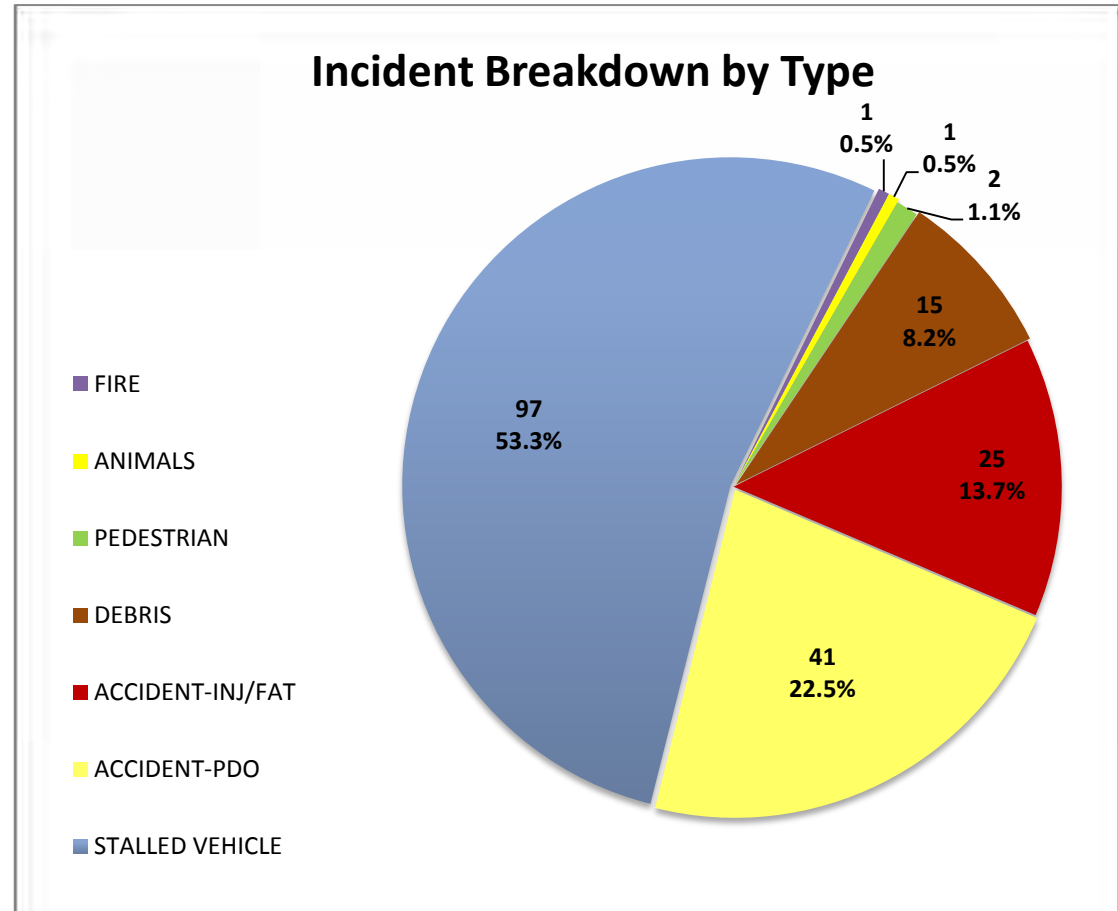
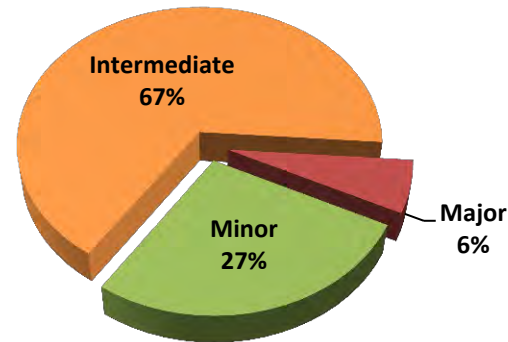


Figure 2: Number and percentage of actively logged incidents in MIST for the report month broken out by type of incident.

Total Crashes by Severity



Severity	Total Crashes	Avg. Duration (hh:mm)
Minor	18	0:10
Intermediate	44	1:02
Major	4	2:56
Grand Total	66	0:55

Incident vs. Crash

Incident- an event occurring on the highway that affects the safety or capacity of the highway

Crash- the collision of a vehicle with another vehicle, animal, pedestrian, debris or stationary object

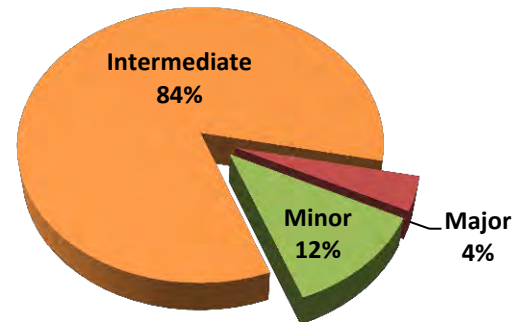
Severity Levels

Minor- *duration under 30 min.*

Intermediate- *duration of 30 min. to 2 hrs.*

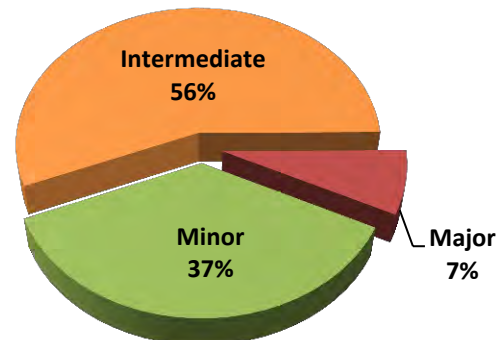
Major – *duration greater than 2 hrs.*

Injury/Fatality Crashes by Severity



Severity	Total Crashes	Avg. Duration (hh:mm)
Minor	3	0:06
Intermediate	21	1:02
Major	1	3:17
Grand Total	25	1:00

Non-Injury Crashes by Severity



Severity	Total Crashes	Avg. Duration (hh:mm)
Minor	15	0:11
Intermediate	23	1:02
Major	3	2:49
Grand Total	41	0:51

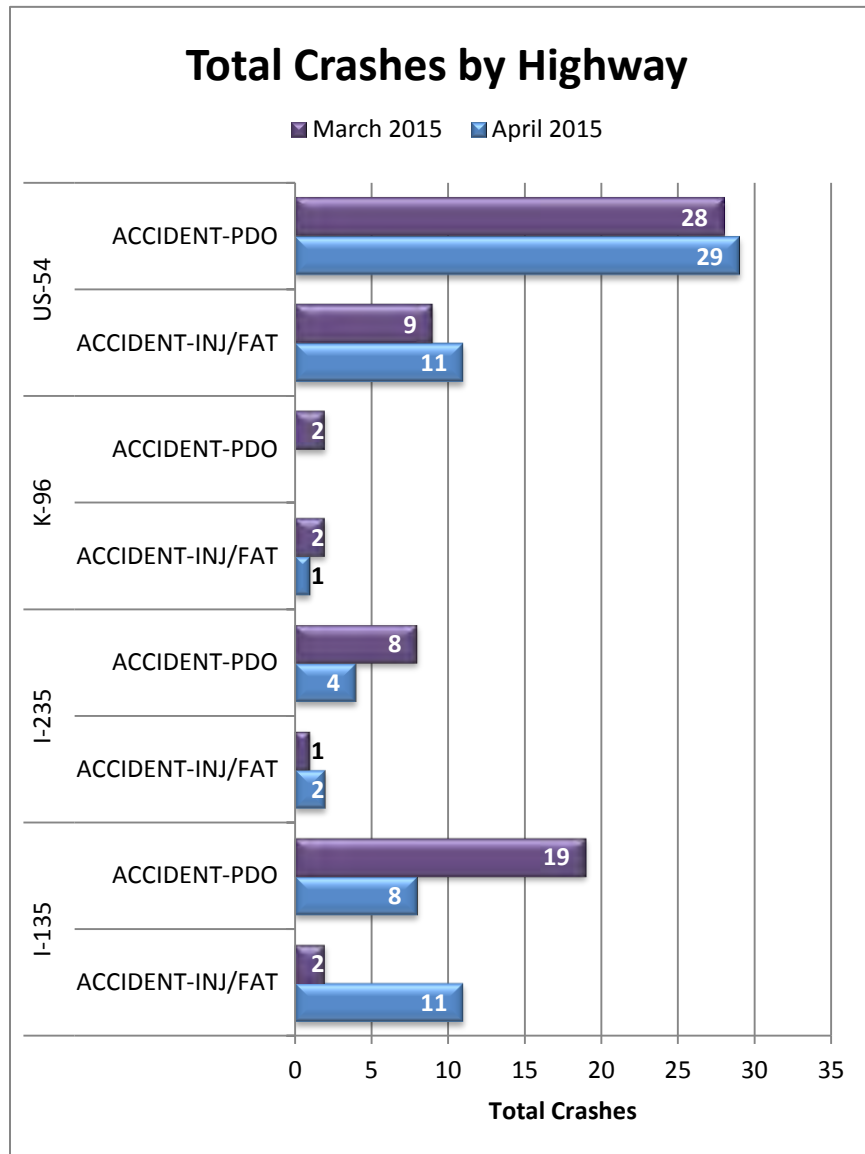


Figure 3: Total Crashes by Highway. Crashes are broken out by “Injury/Fatality” and “Property Damage Only”.

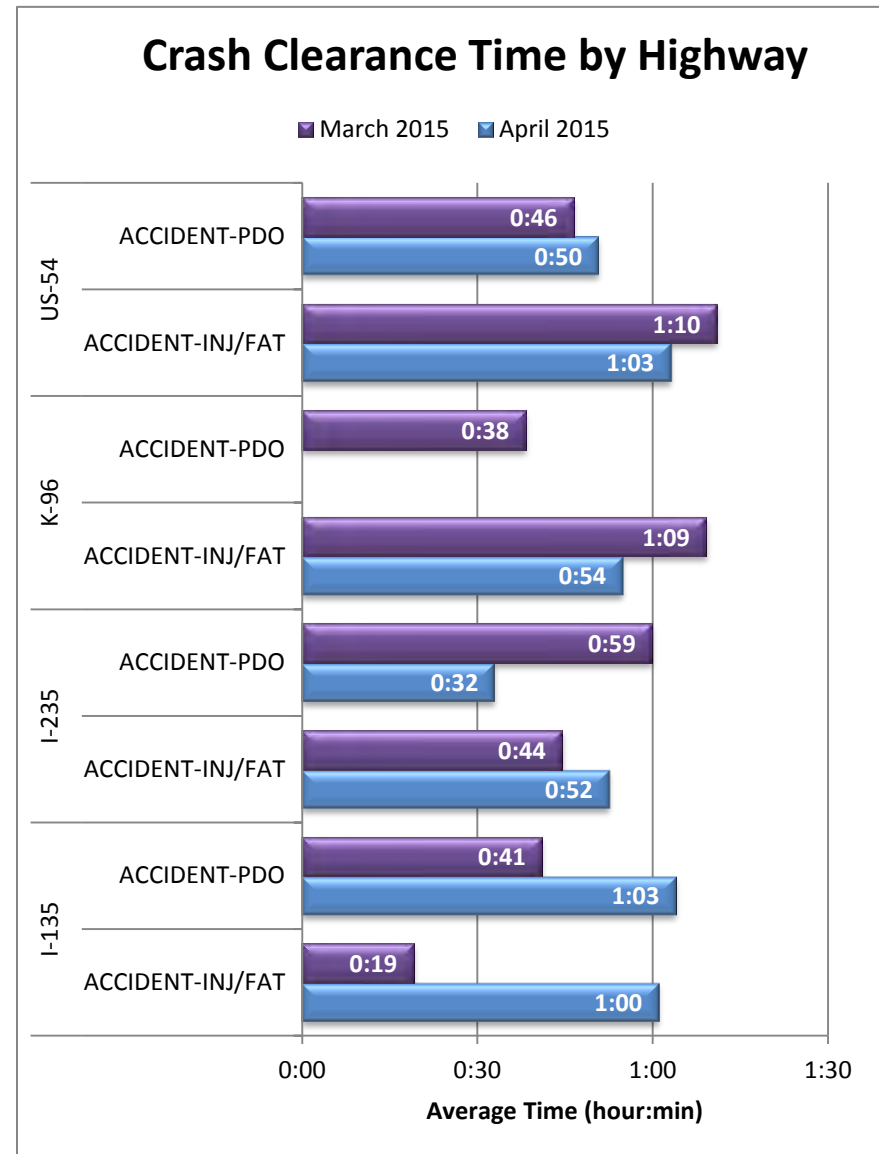


Figure 4: Average Crash Clearance Time by Highway. Crashes are broken out by “Injury/Fatality” and “Property Damage Only”.

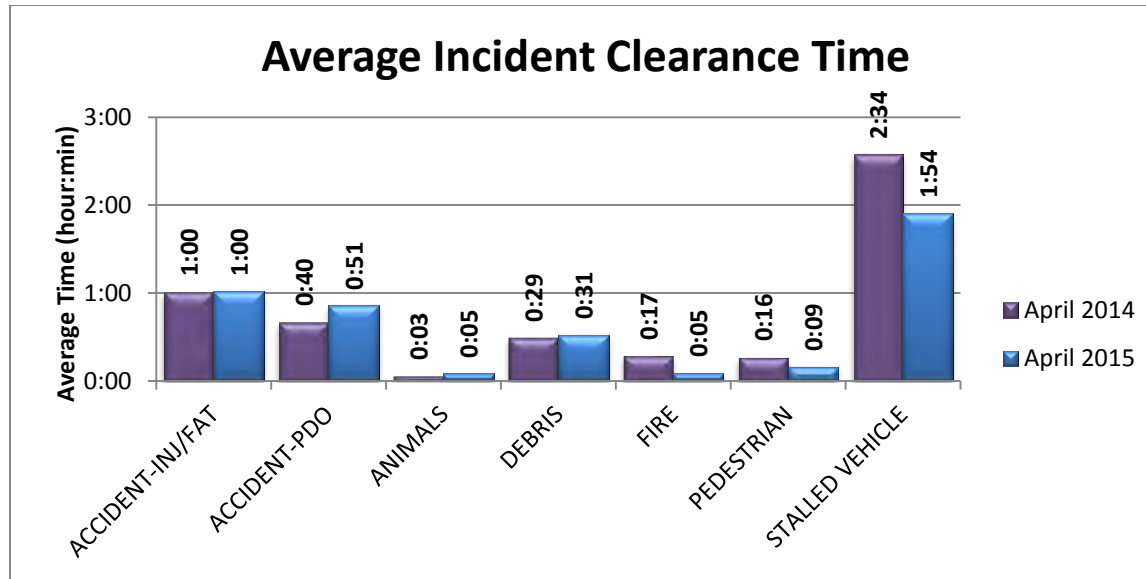


Figure 5: Average Incident Clearance time (2015 vs. 2014). Construction and tow events excluded for clarity.

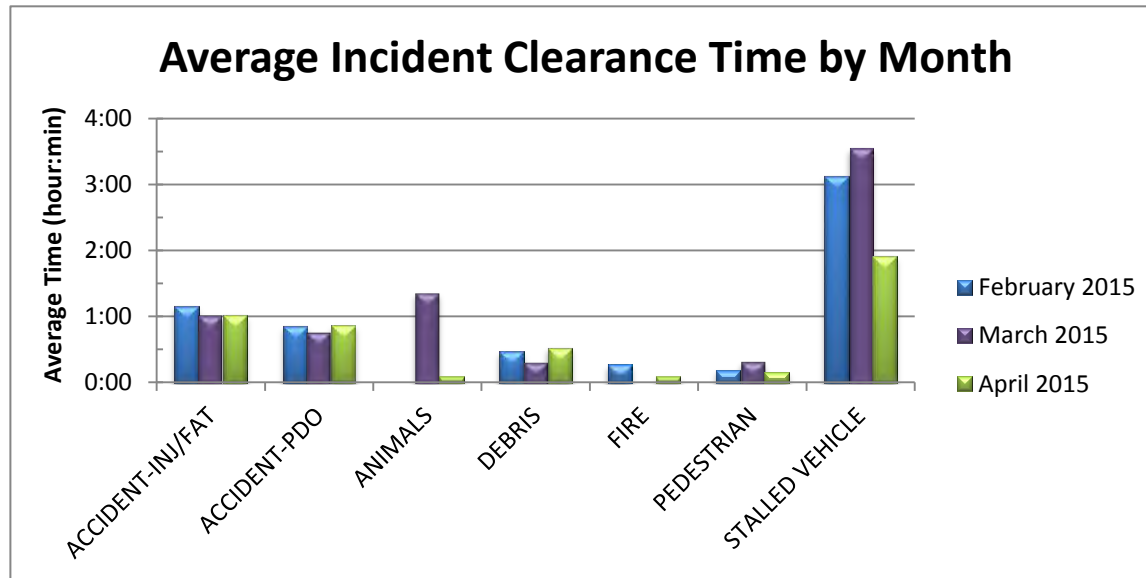


Figure 6: Average Incident Clearance time by type for the last 3 months. Construction and tow events excluded for clarity.