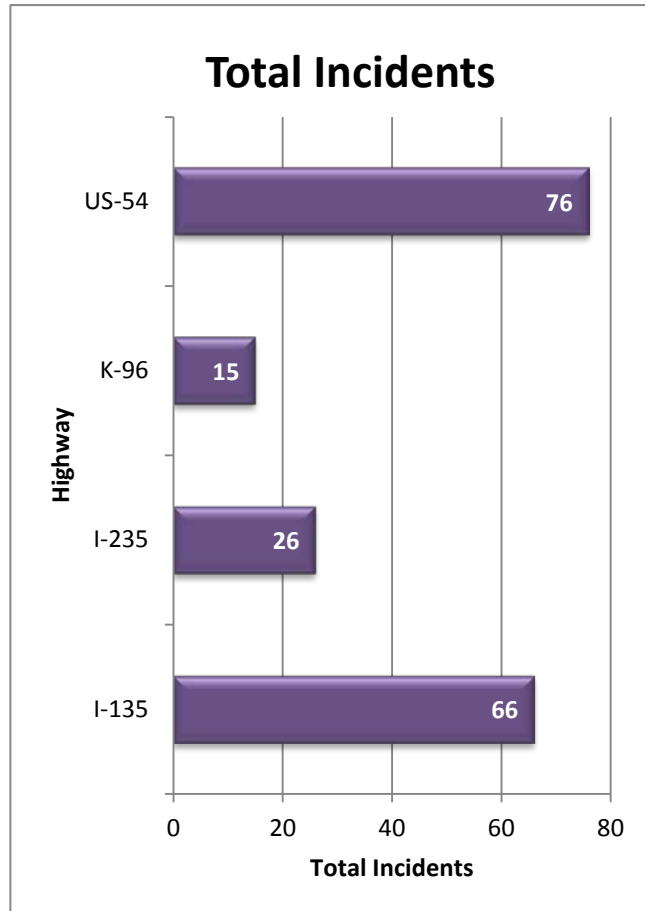
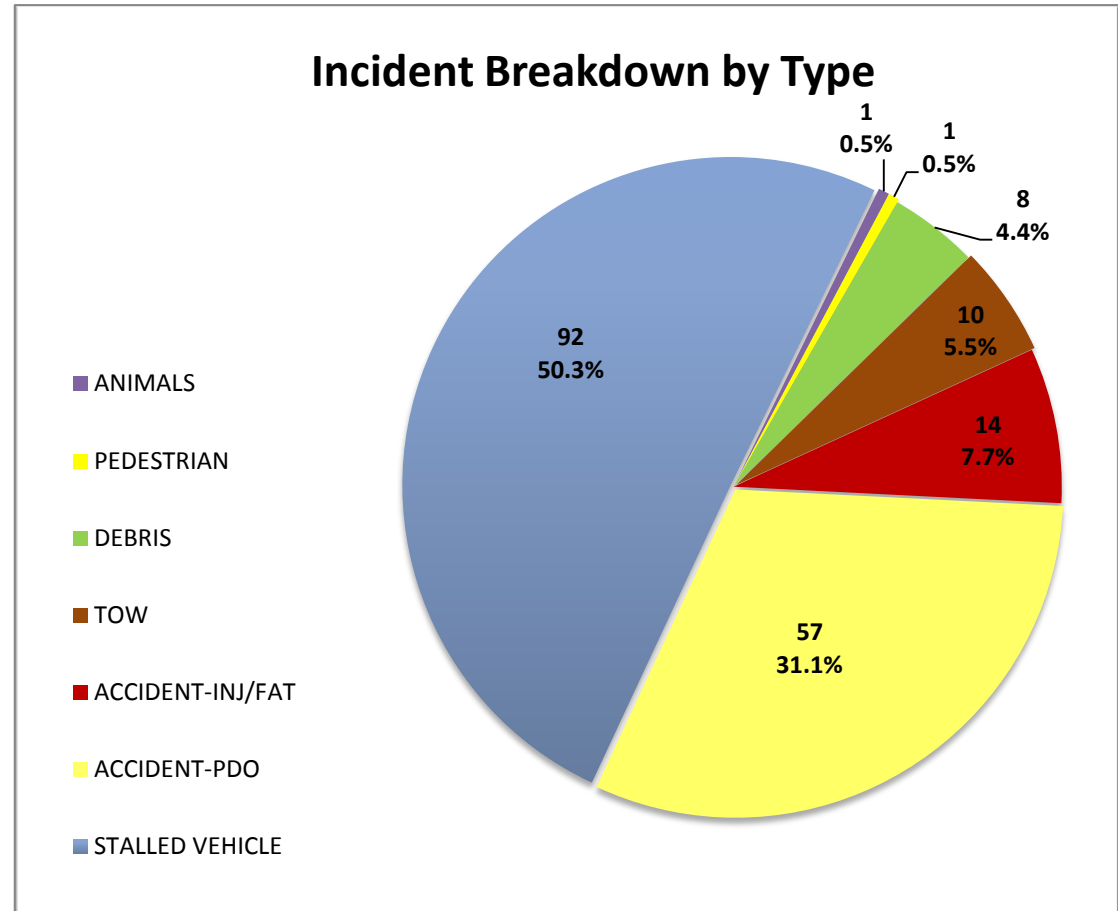


## Wichita TMC Support- Monthly Incident Report for March 2015

There were a total of **183** actively logged incidents during the month. The Traffic Management Center (TMC) is actively staffed 6am to 7pm, Monday-Friday, but additional incidents may be recorded outside normal hours. Below is a breakdown of active incident type as well as average duration of incident by type. Incidents are only reported where TMC system coverage is available for verification.

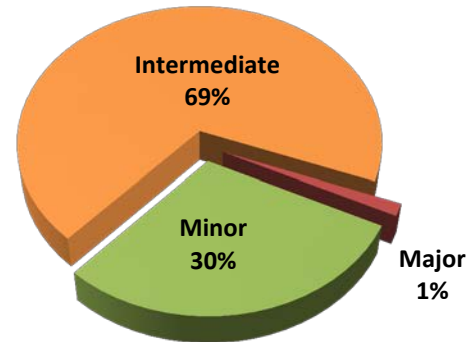


**Figure 1: Total incidents by Highway**



**Figure 2: Number and percentage of actively logged incidents in MIST for the report month broken out by type of incident.**

## Total Crashes by Severity



Severity	Total Crashes	Avg. Duration (hh:mm)
Minor	21	0:15
Intermediate	49	1:01
Major	1	2:35
<b>Grand Total</b>	<b>71</b>	<b>0:49</b>

### Incident vs. Crash

**Incident**- an event occurring on the highway that affects the safety or capacity of the highway

**Crash**- the collision of a vehicle with another vehicle, animal, pedestrian, debris or stationary object

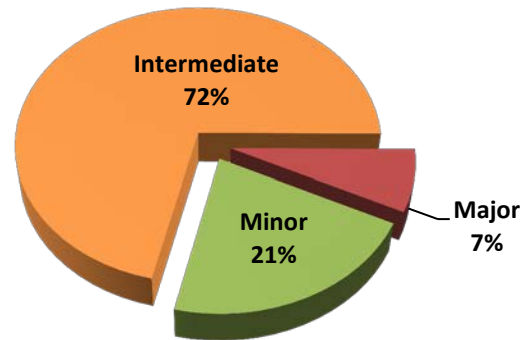
### Severity Levels

Minor- duration under 30 min.

Intermediate- duration of 30 min. to 2 hrs.

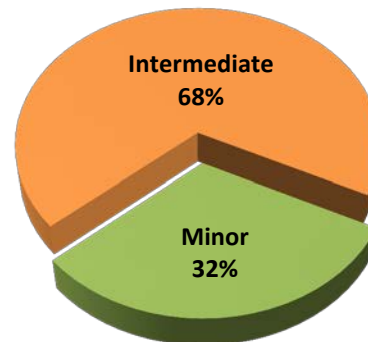
Major – duration greater than 2 hrs.

## Injury/Fatality Crashes by Severity

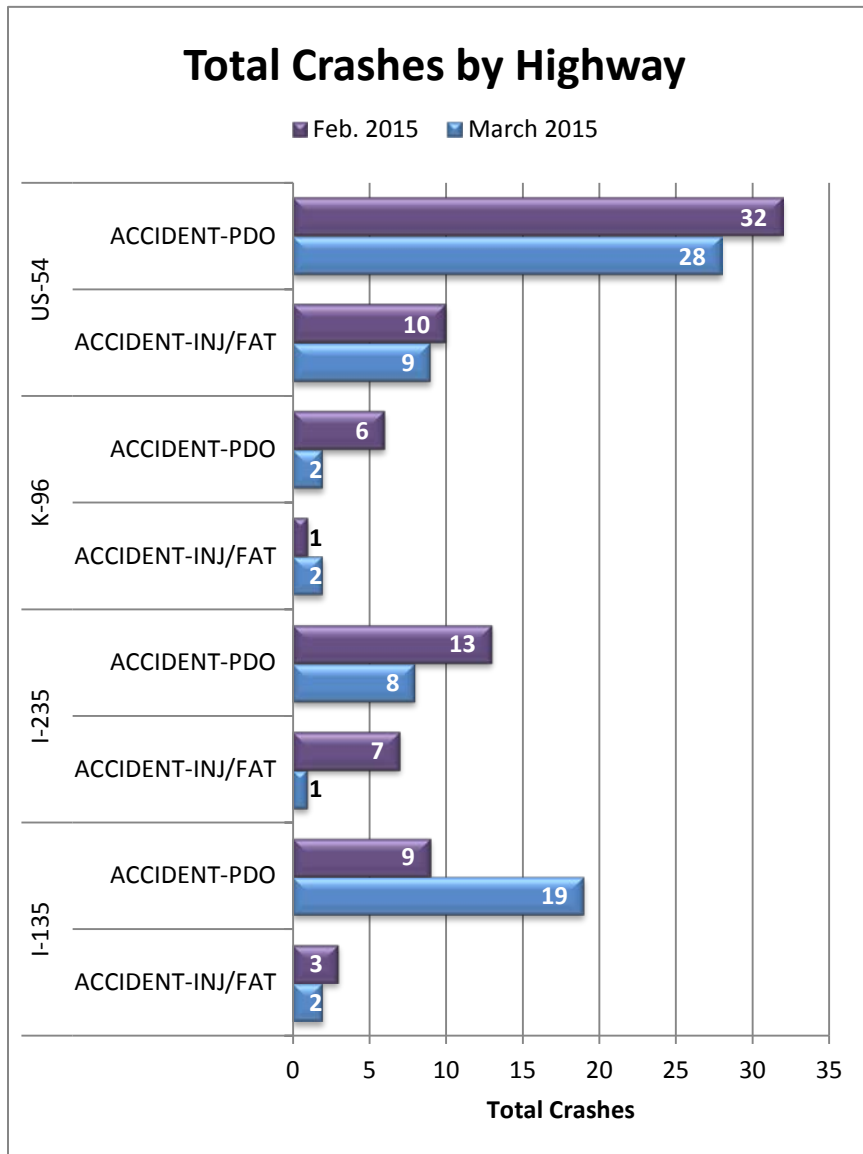


Severity	Total Crashes	Avg. Duration (hh:mm)
Minor	3	0:17
Intermediate	10	1:05
Major	1	2:35
<b>Grand Total</b>	<b>14</b>	<b>1:01</b>

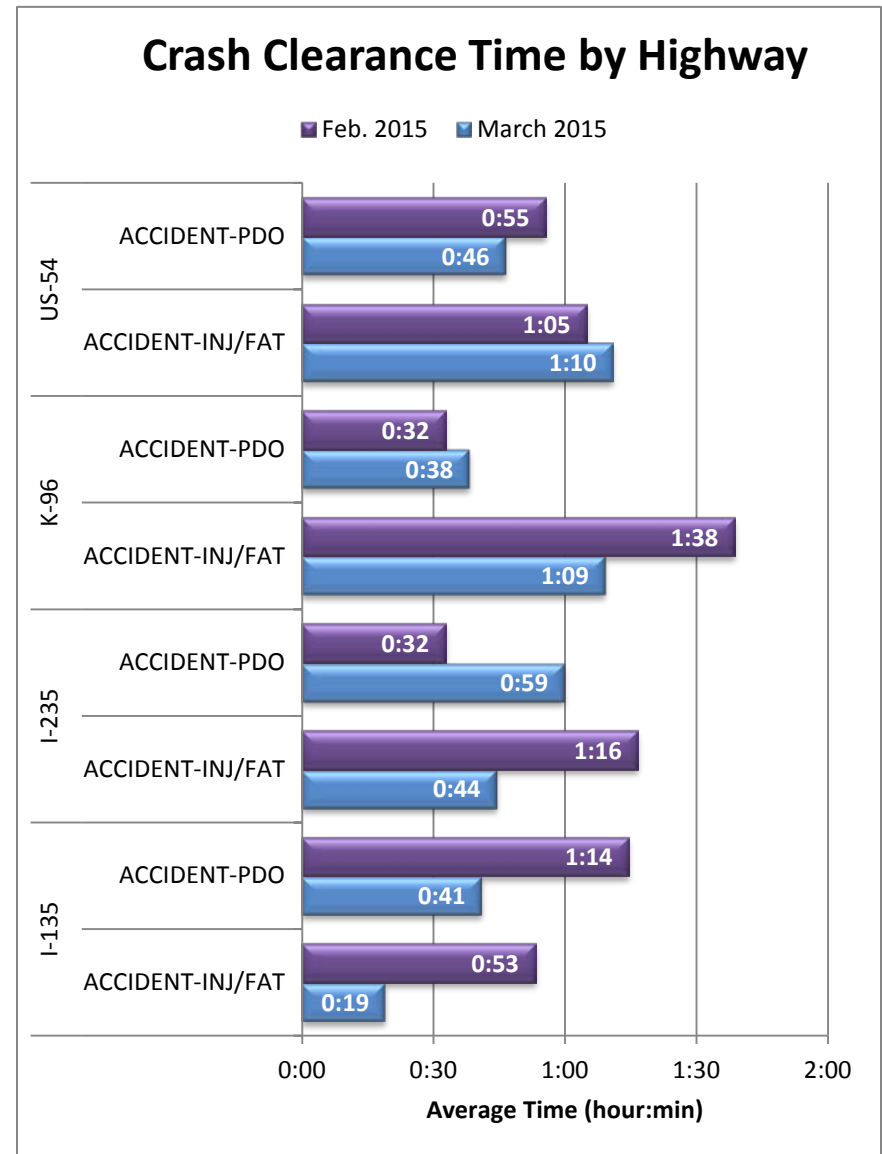
## Non-Injury Crashes by Severity



Severity	Total Crashes	Avg. Duration (hh:mm)
Minor	18	0:17
Intermediate	10	1:05
<b>Grand Total</b>	<b>57</b>	<b>0:46</b>



**Figure 3: Total Crashes by Highway. Crashes are broken out by “Injury/Fatality” and “Property Damage Only”.**



**Figure 4: Average Crash Clearance Time by Highway. Crashes are broken out by “Injury/Fatality” and “Property Damage Only”.**

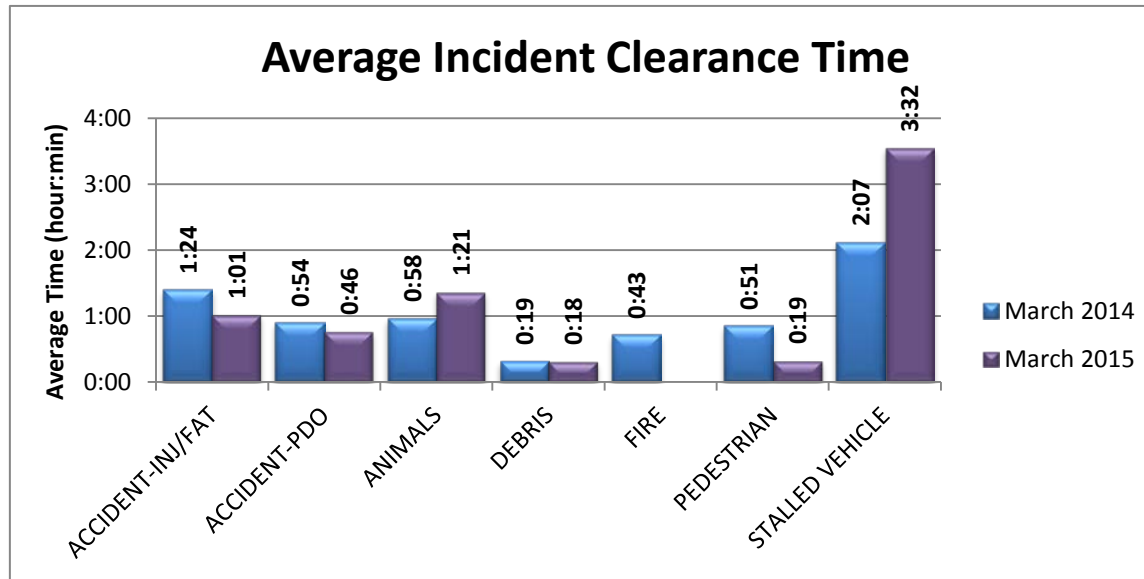


Figure 5: Average Incident Clearance time (2015 vs. 2014). Construction and tow events excluded for clarity.

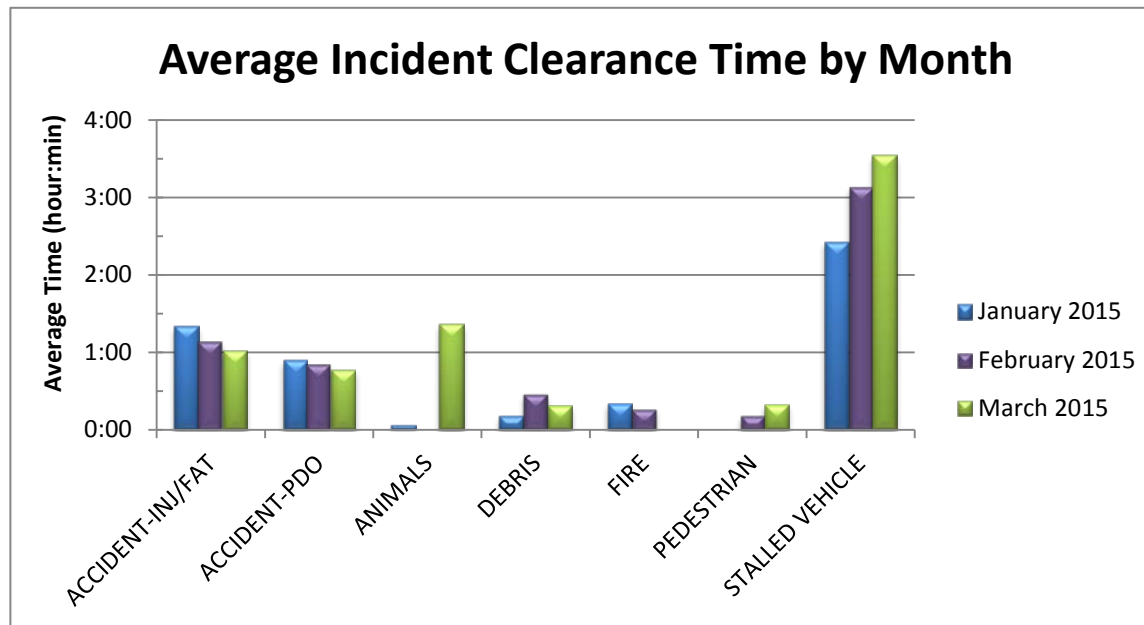


Figure 6: Average Incident Clearance time by type for the last 3 months. Construction and tow events excluded for clarity.