

Wichita TMC Support- Monthly Incident Report for September 2014

There were a total of **158** actively logged incidents during the normal TMC staffed hours of 6am to 7pm, Monday-Friday. Below is a breakdown of active incident type as well as average duration of incident by type. Incidents are only reported where TMC system coverage is available for verification.

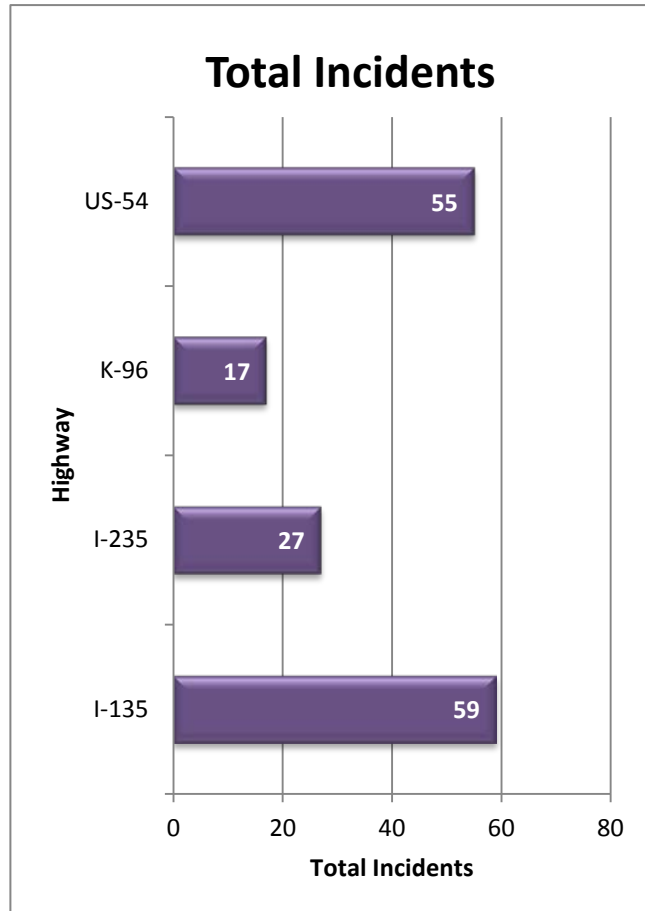


Figure 1: Total incidents by Highway

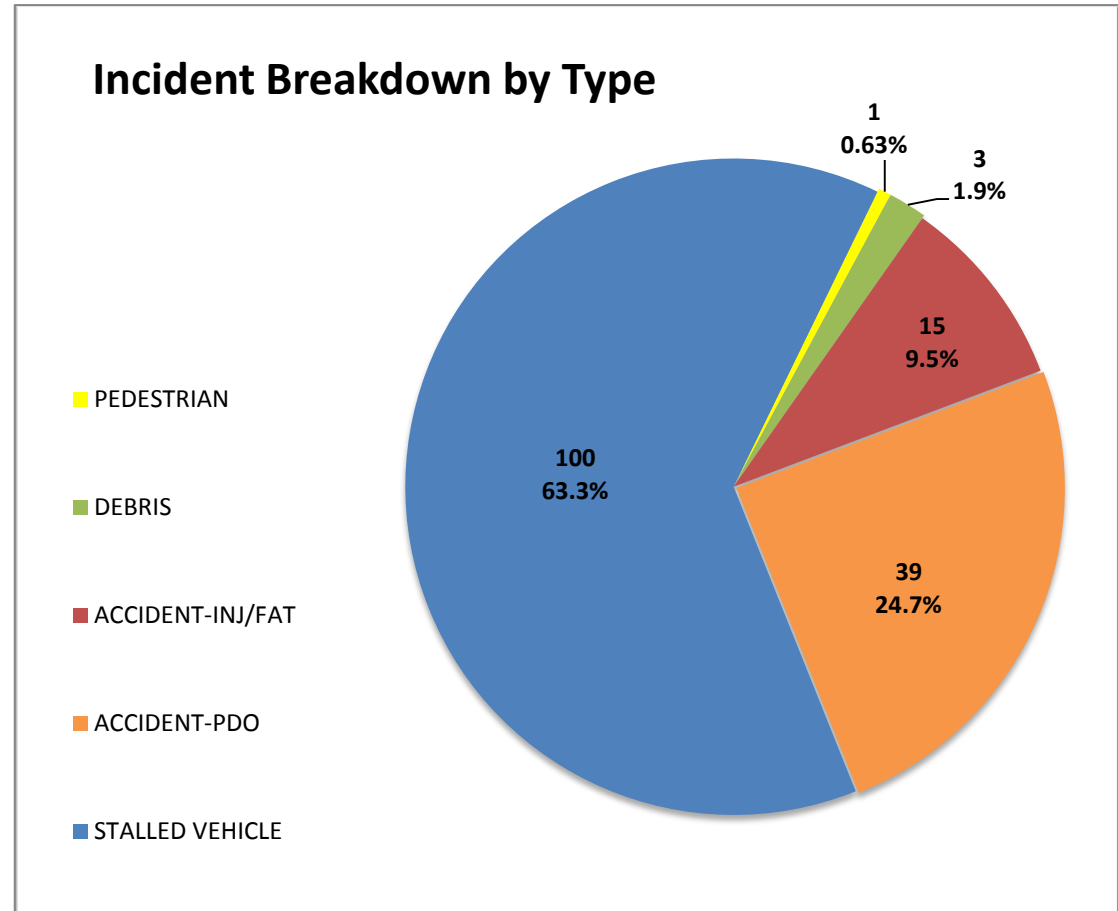
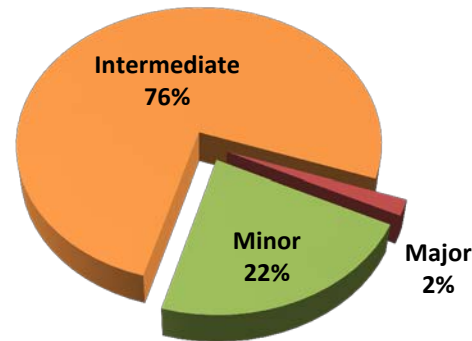


Figure 2: Number and percentage of actively logged incidents in MIST for the report month broken out by type of incident.

Total Crashes by Severity



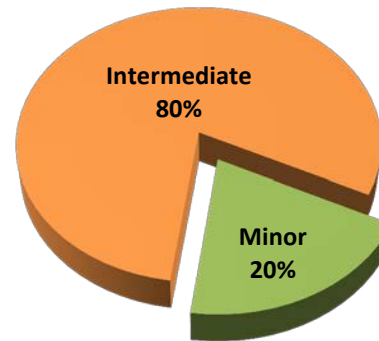
Severity	Total Crashes	Avg. Duration (hh:mm)
Minor	12	0:16
Intermediate	41	0:57
Major	1	2:22
Grand Total	54	0:49

Incident vs. Crash

Incident- an event occurring on the highway that affects the safety or capacity of the highway

Crash- the collision of a vehicle with another vehicle, animal, pedestrian, debris or stationary object

Injury/Fatality Crashes by Severity



Severity	Total Crashes	Avg. Duration (hh:mm)
Minor	3	0:16
Intermediate	12	1:01
Grand Total	15	0:52

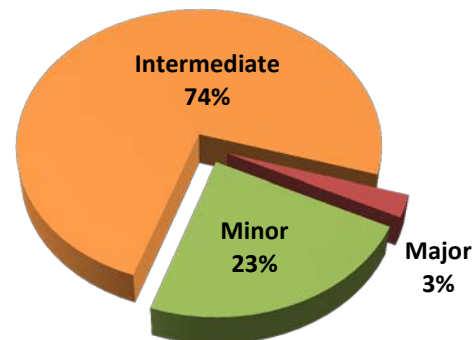
Severity Levels

Minor- duration under 30 min.

Intermediate- duration of 30 min. to 2 hrs.

Major – duration greater than 2 hrs.

Non-Injury Crashes by Severity



Severity	Total Crashes	Avg. Duration (hh:mm)
Minor	9	0:15
Intermediate	29	0:55
Major	1	2:22
Grand Total	39	0:48

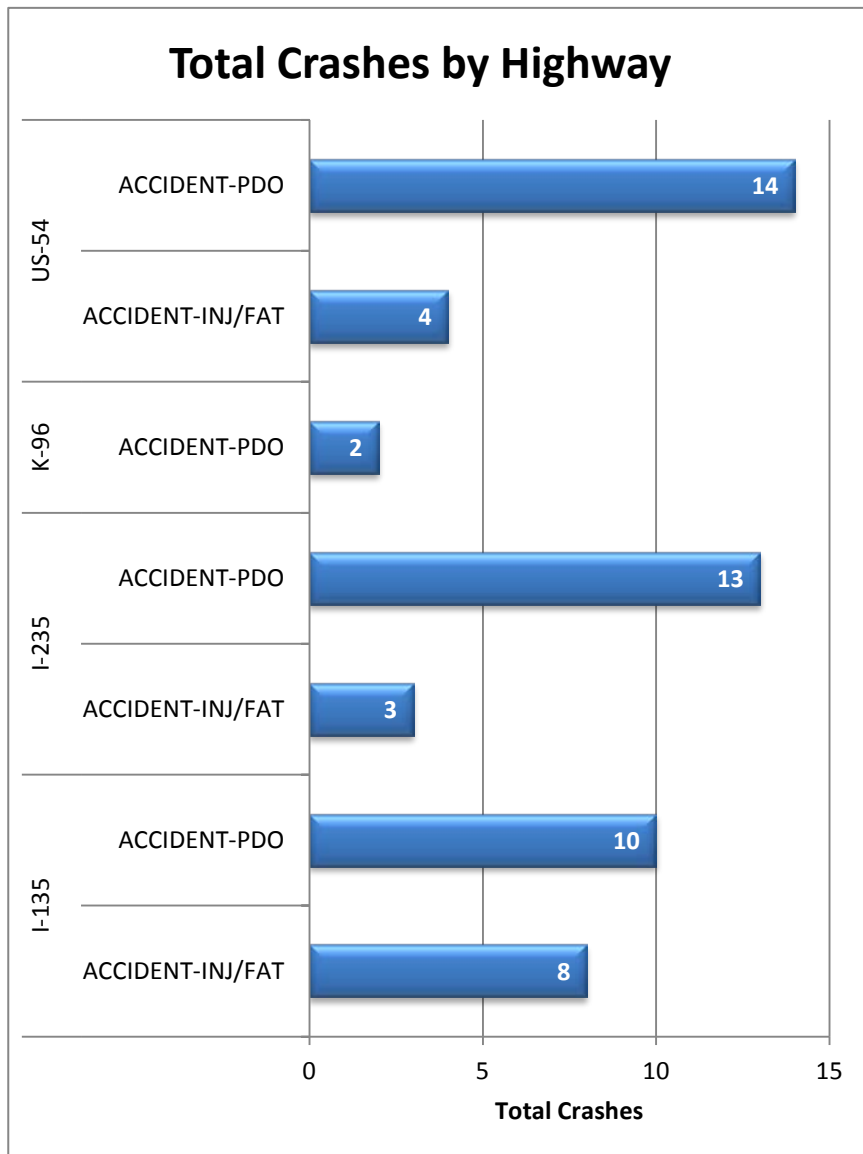


Figure 3: Total Crashes by Highway. Crashes are broken out by “Injury/Fatality” and “Property Damage Only”.

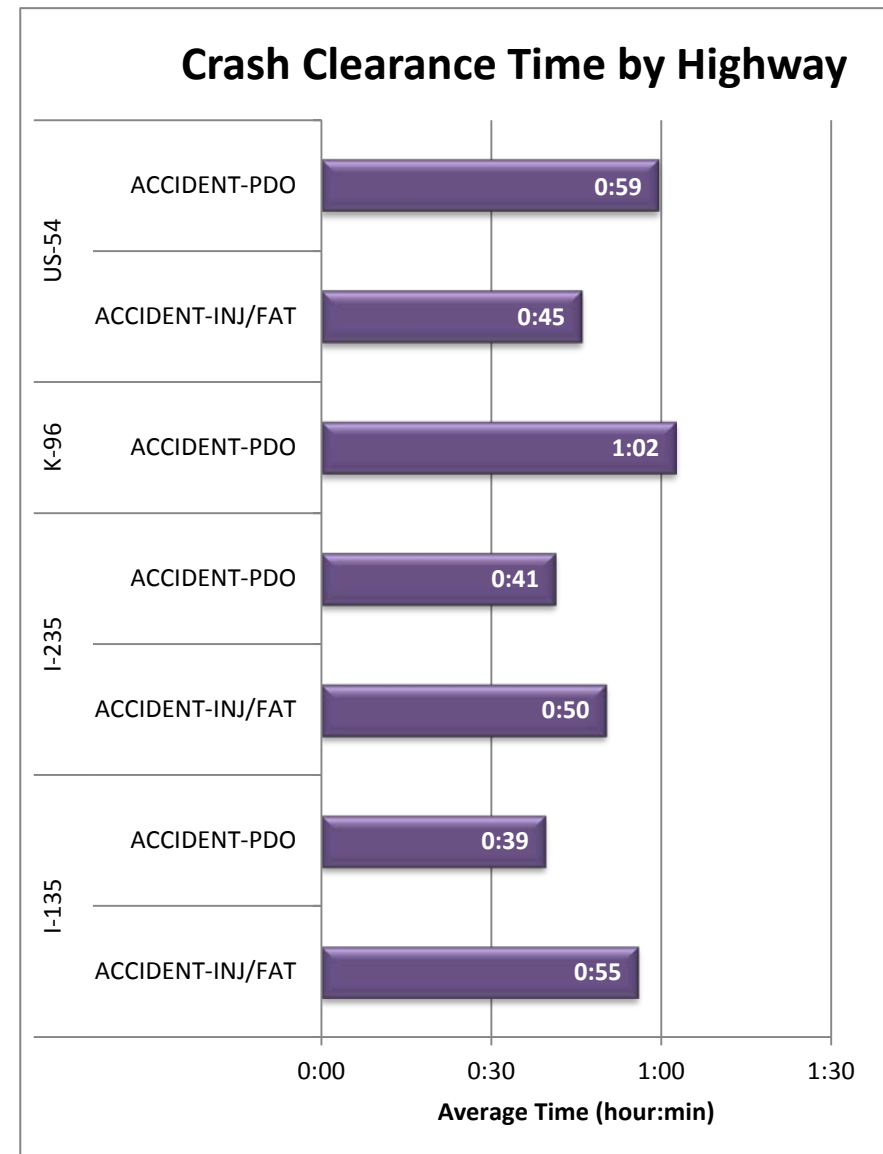


Figure 4: Average Crash Clearance Time by Highway. Crashes are broken out by “Injury/Fatality” and “Property Damage Only”.

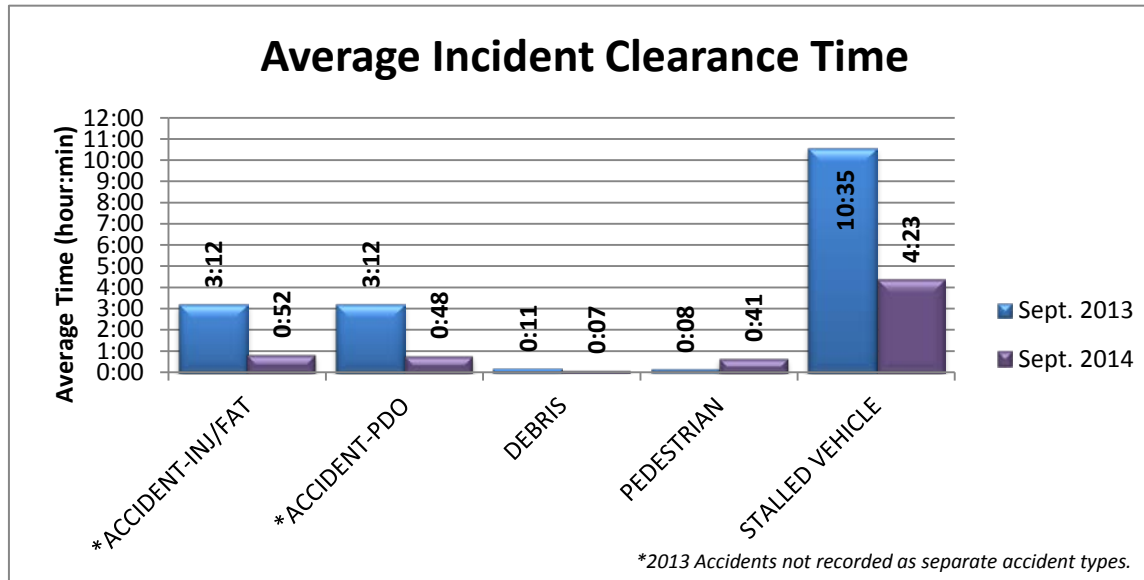


Figure 5: Average Incident Clearance time (2014 vs. 2013). Construction and tow events excluded for clarity.

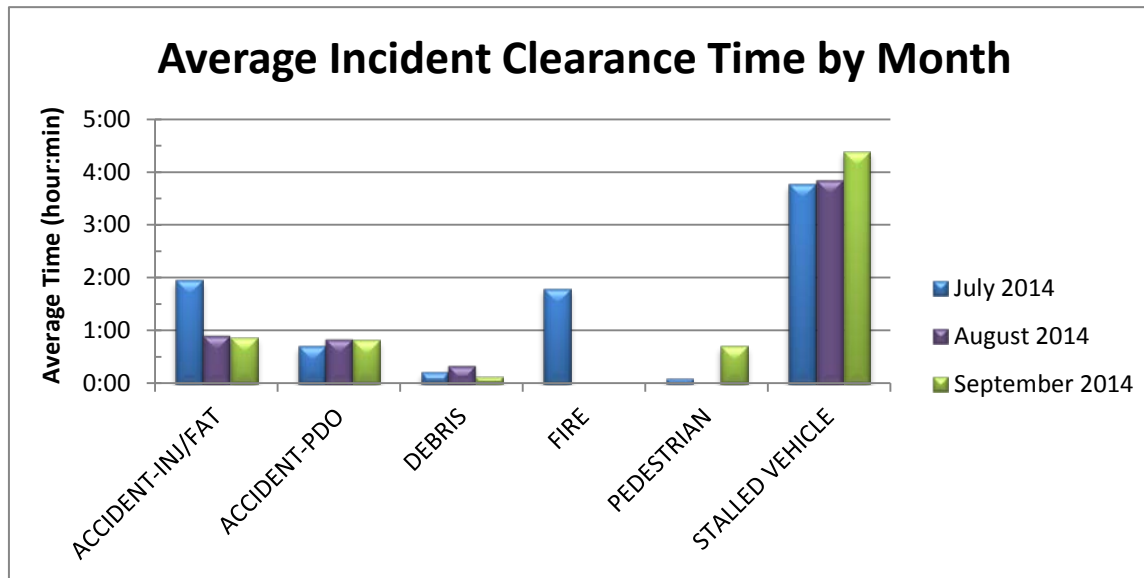


Figure 6: Average Incident Clearance time by type for the last 3 months. Construction and tow events excluded for clarity.