

Wichita TMC Support- Monthly Incident Report for June 2014

There were a total of **185** actively logged incidents during the normal TMC staffed hours of 6am to 7pm, Monday-Friday. Below is a breakdown of active incident type as well as average duration of incident by type. Incidents are only reported where TMC system coverage is available for verification.

Highway	Number of Incidents
I-135	74
I-235	20
K-96	26
US-54	65
Grand Total	185

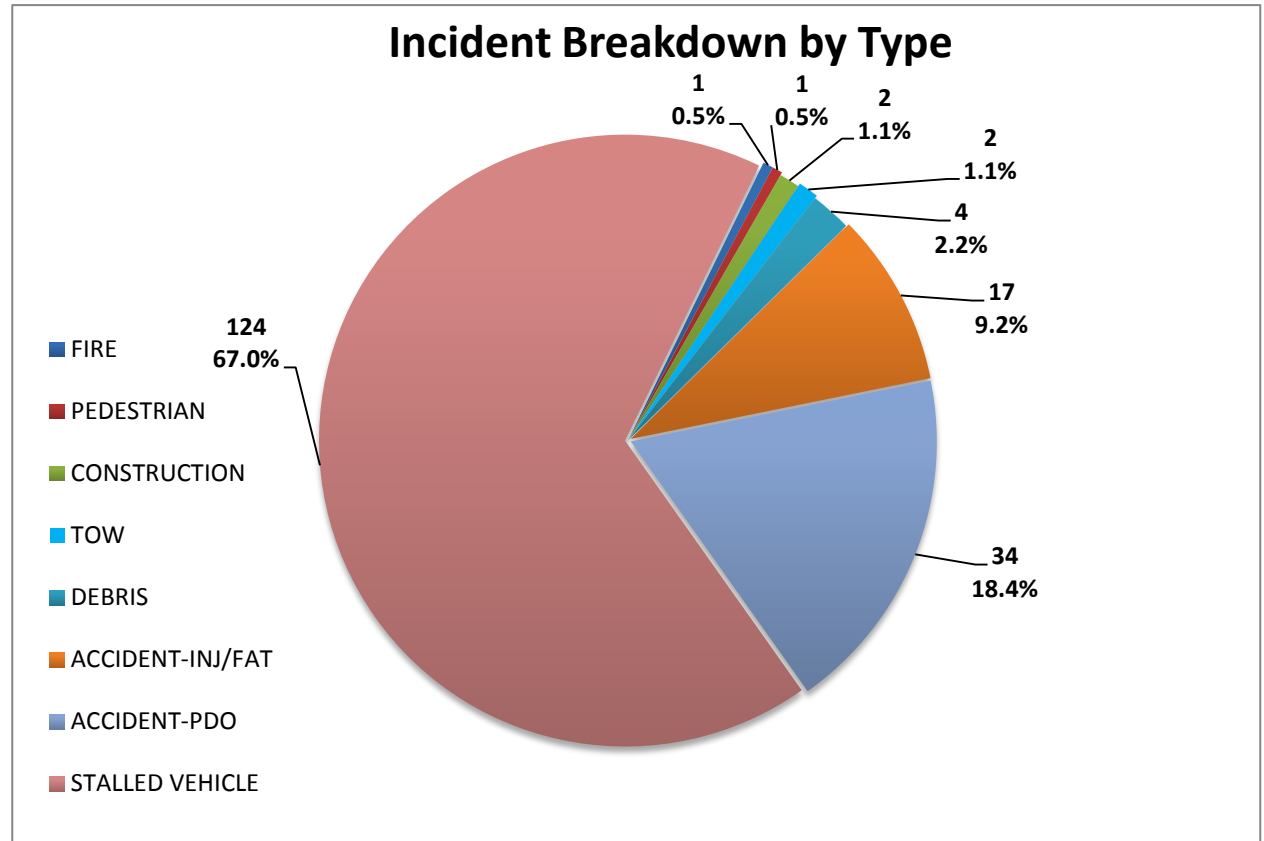
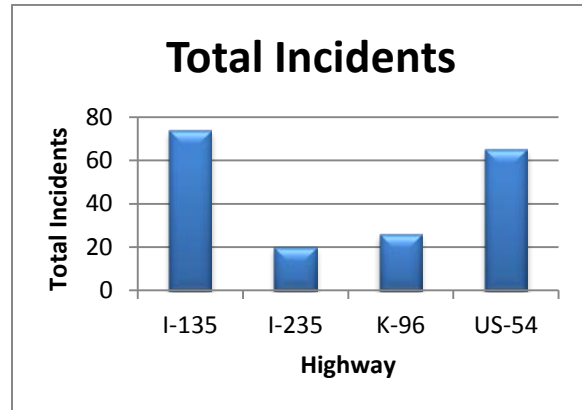
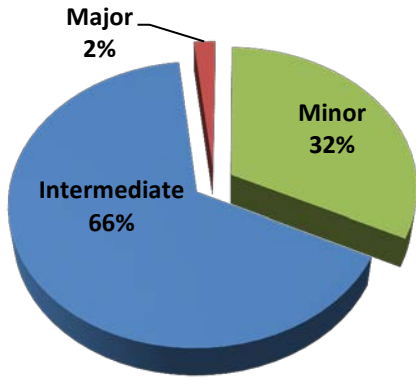


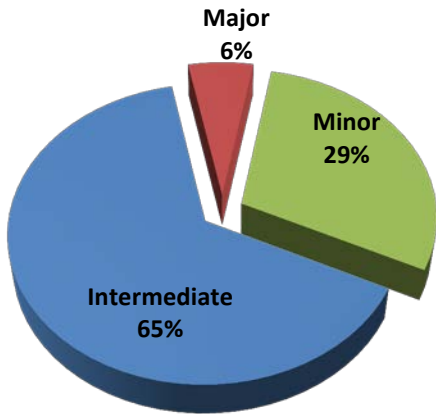
Figure 1: Number and percentage of actively logged incidents in MIST for the month of June broken out by type of incident.

Total Crashes by Severity

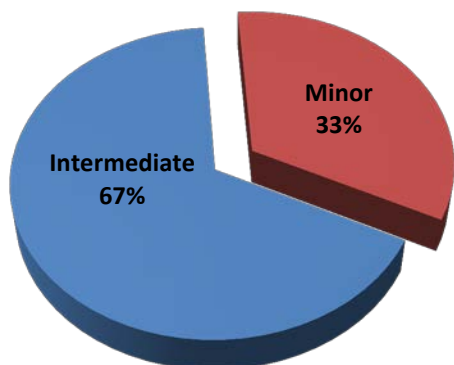


Severity Levels
 Minor- duration under 30 min.
 Intermediate- duration of 30 min. to 2 hrs.
 Major – duration greater than 2 hrs.

Injury/Fatality Crashes by Severity



Non-Injury Crashes by Severity



Crash Clearance Time by Highway

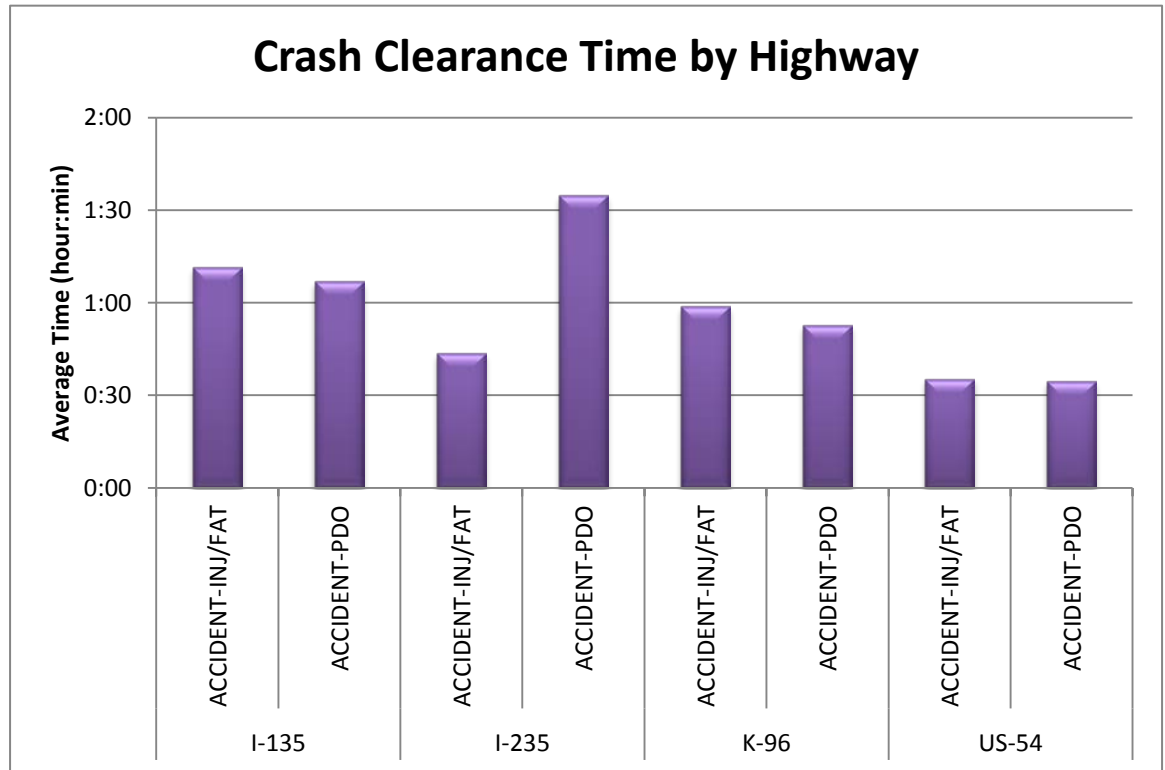


Figure 2: Average Crash Clearance Time by Highway. Crashes are broken out by “Injury/Fatality” and “Property Damage Only”.

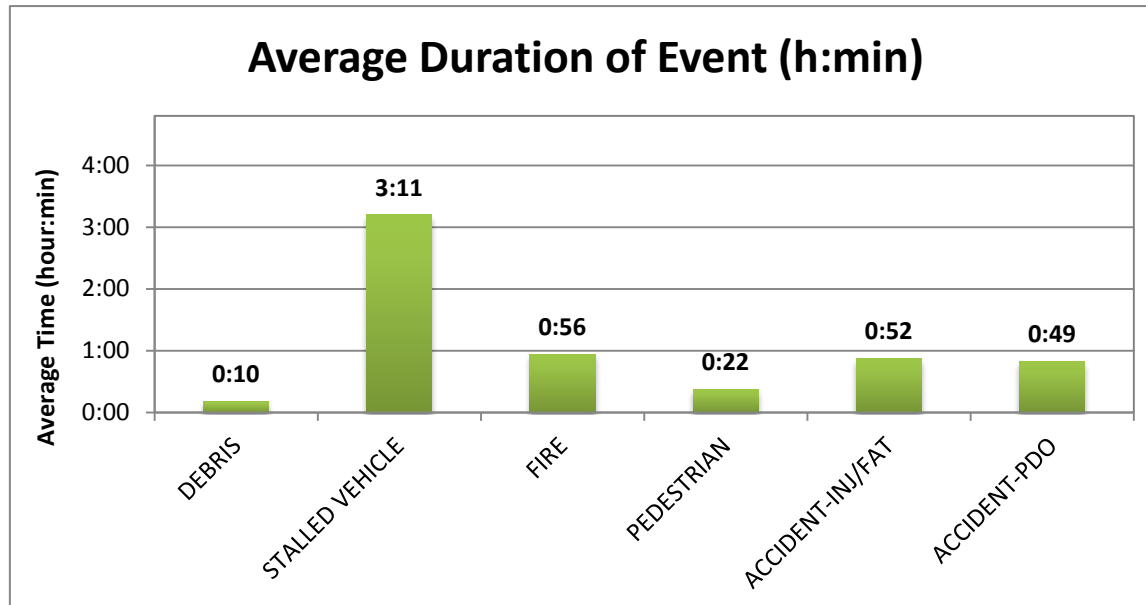


Figure 3: Average Duration of Incident by type for the month of June. Construction and tow events excluded for clarity.

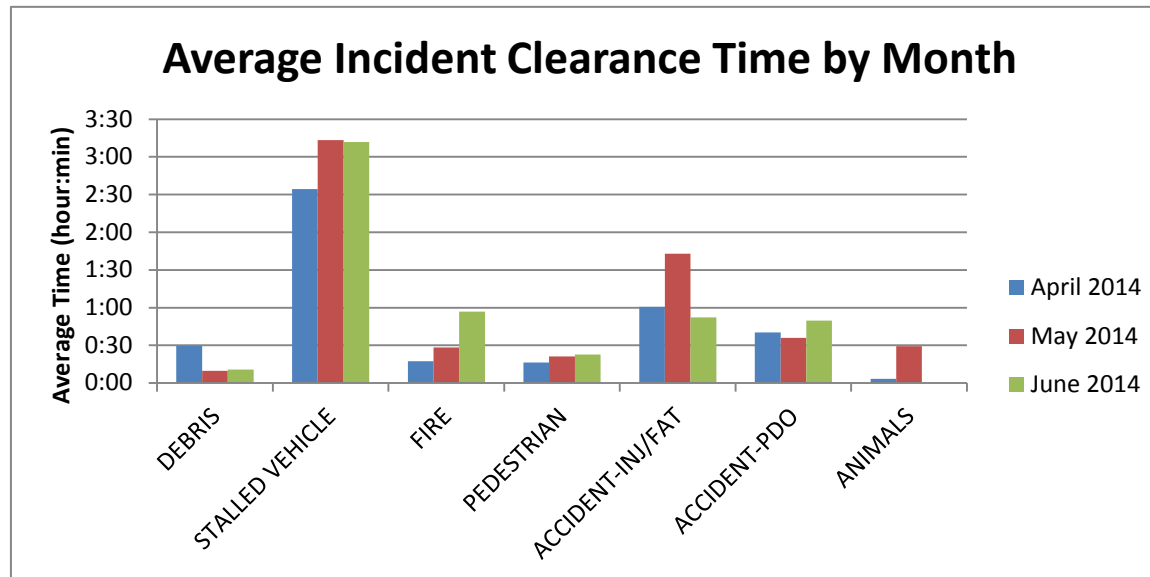


Figure 4: Average Incident Clearance time by type for the last 3 months. Construction and tow events excluded for clarity.