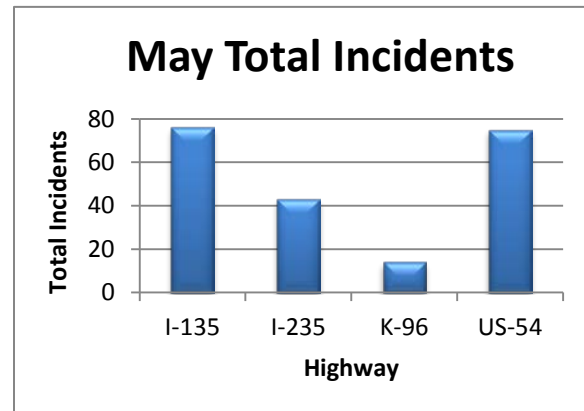


Wichita TMC Support- Monthly Incident Report for May 2014

There were a total of **208** actively logged incidents during the normal TMC staffed hours of 6am to 7pm, Monday-Friday. Any congestion incidents that were logged by the MIST system without additional operator information were excluded from the analysis. Below is a breakdown of active incident type as well as average duration of incident by type.

Highway	Number of Incidents
I-135	76
I-235	43
K-96	14
US-54	75
Grand Total	208



Incident Breakdown by Type

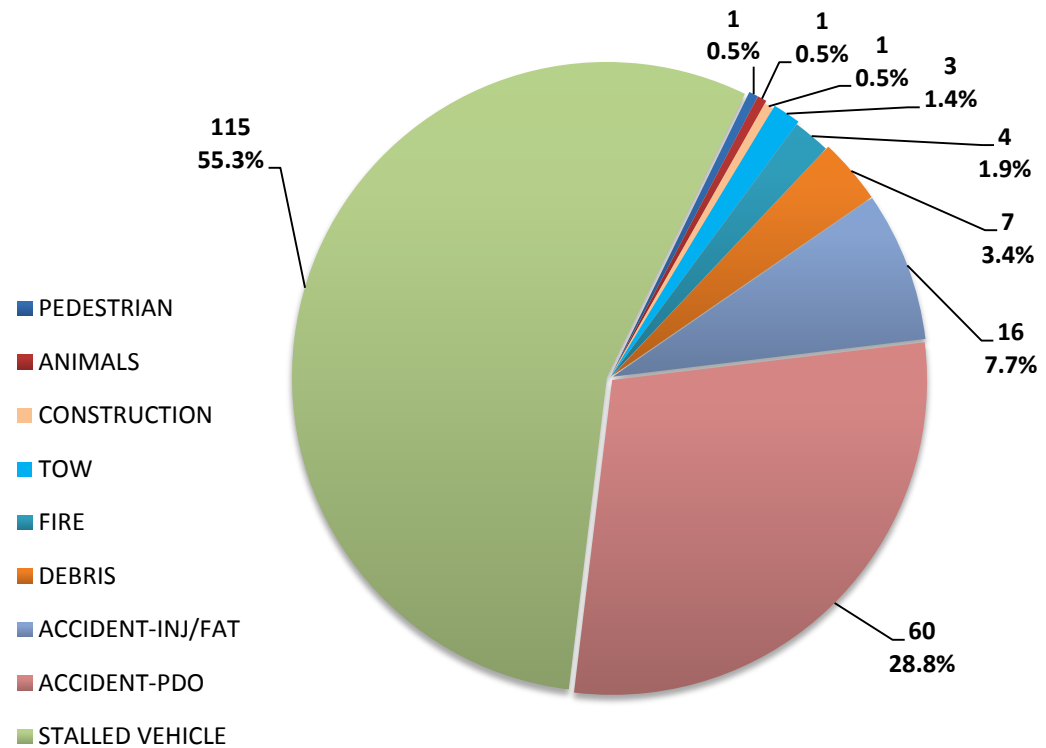
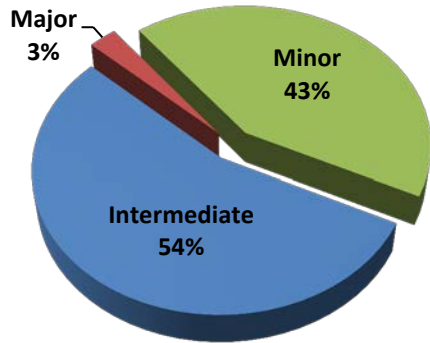
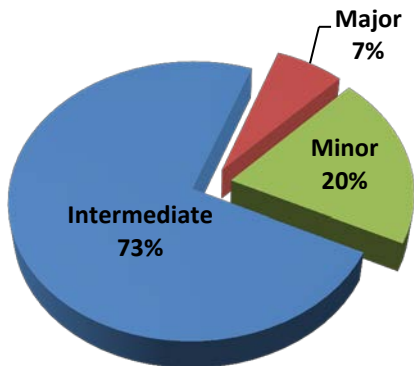


Figure 1: Number and percentage of actively logged incidents in MIST for the month of May broken out by type of incident.

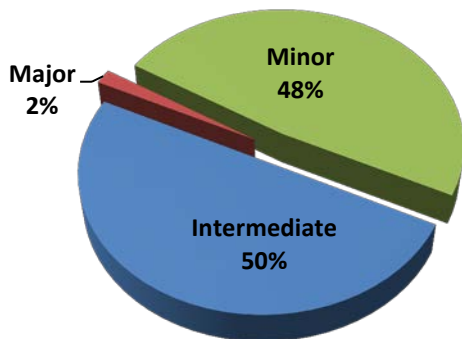


Severity Levels
 Minor- duration under 30 min.
 Intermediate- duration of 30 min. to 2 hrs.
 Major – duration greater than 2 hrs.

Injury/Fatality Crashes by Severity



Non-Injury Crashes by Severity



Average Crash Clearance Time by Highway

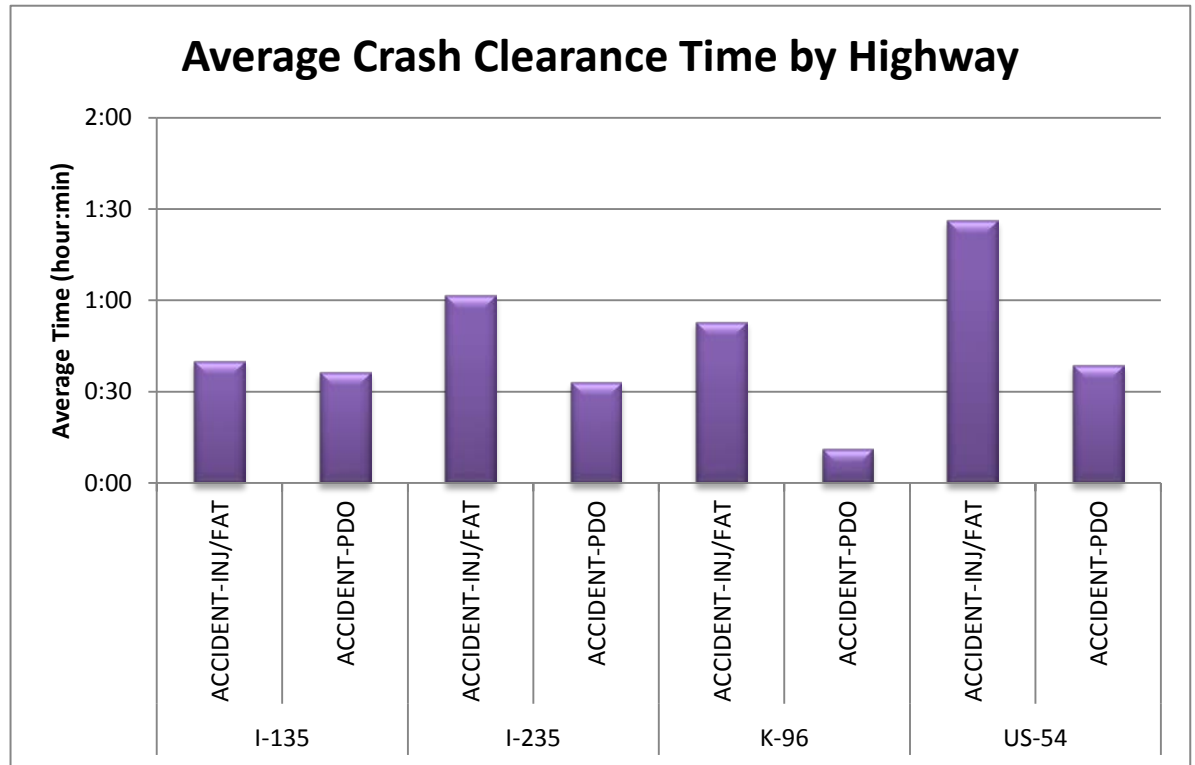


Figure 2: Average Crash Clearance Time by Highway. Crashes are broken out by "Injury/Fatality" and "Property Damage Only".

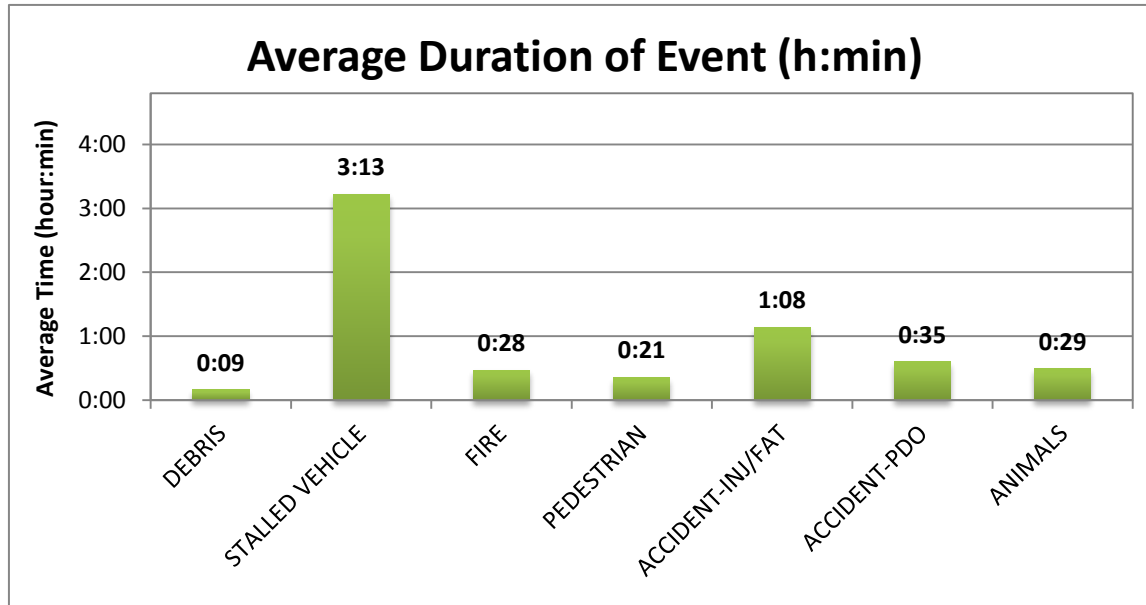


Figure 3: Average Duration of Incident by type for the month of May. Construction and tow events excluded for clarity.

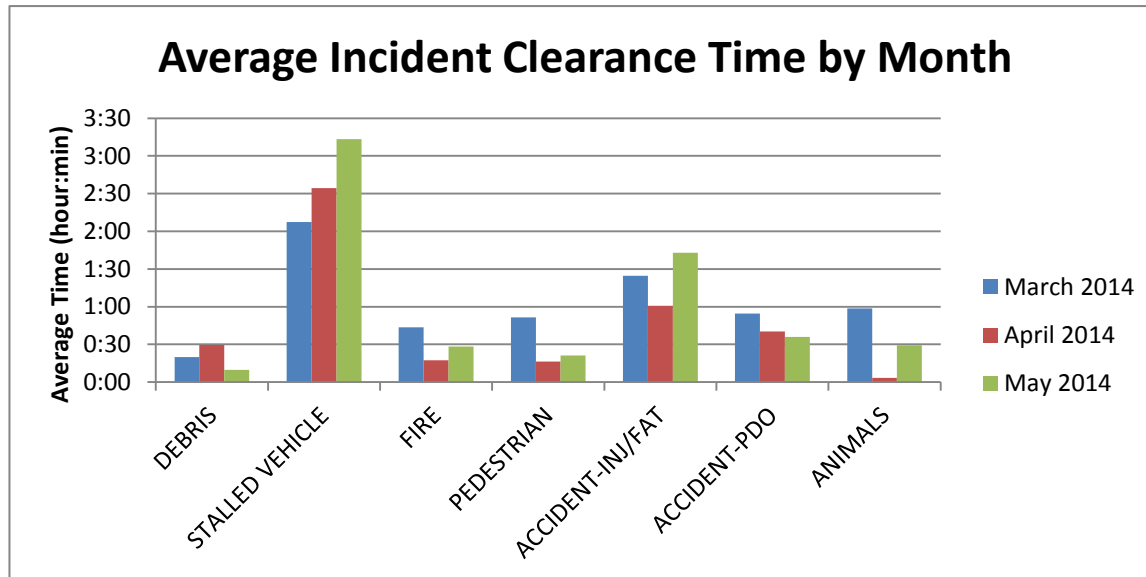


Figure 4: Average Incident Clearance time by type for the last 3 months. Construction and tow events excluded for clarity.